



The State of the Network

@ the end of 2011

Dr. Osman Sankoh
Executive Director

On behalf of the Board Chair

26 October 2011 @ AGM, Maputo





Doing INDEPTH Business...

*As... but not completely
...as usual!*

Focus, Quality, Innovation



Outline of the Address

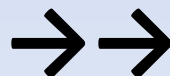
- Network Activities
 - Some definitions
 - Scientific
 - Capacity Strengthening and Training
 - Administrative
 - Financial
- Key Messages
 - from the Board
 - from the SAC
 - from the Secretariat

Some Definitions – AGM vs. ISC

- The Annual General Meeting (AGM) – administrative business of the organisation
 - Centre leaders meet annually
 - Elect members of the Board of Trustees
- The INDEPTH Scientific Conference (ISC)
 - Scientific forum of the Network
 - **Once every two years**
 - Focus on improving science
 - Ability to look for more funding for the conference
 - Next ISC will take place in 2013
 - Reducing cost of the ISC
 - Not necessarily meet in a country with an INDEPTH HDSS member centre

Some Definitions – HDSS Centre vs. HDSS Field Site

- HDSS Centre – Parent Institution which runs the HDSS field site
- An HDSS Centre may have one or more HDSS field sites (HDSSs) not independent of the Centre
- Applicant for INDEPTH membership is the parent institution / designee
- The director or designee of parent institution receives funds and signs on all sub-grants from INDEPTH
- Same core funding raised by parent institution to run all 2 or more field sites
- All staff paid by parent institution
- All or most senior staff housed in parent institution's premises
- The designated leaders for INDEPTH for the two or more HDSSs are paid by and housed in the parent institution
- Parent institution involved in nearly day-to-day running of the field sites (HDSSs)



HDSS Centre vs. HDSS Field Site – The Implications

- Only the parent institution or a designee may vote for Board members and resolutions at the AGM
- Only the director of the parent institution or a designee can be the INDEPTH Centre Leader
- Designated heads of field sites are only ALTERNATE CONTACTS
- Only one alternate contact may be voted for at a time to serve on the Board; he/she must have written recommendation by the Centre Leader, especially where the Centre Leader himself/herself is not taking part. Where the Centre Leader is interested, no alternate contact may stand for election
- We count the INDEPTH members as the CENTRES running the HDSS field sites but not the HDSSs
- We list the number of HDSS field sites separately
- An HDSS centre with two or more field sites may nominate different participants to INDEPTH workshops to represent the field sites

Criteria for Full Membership of INDEPTH - 1

- ***Full members must:***

1. Operate an HDSS – at the minimum, have had at least one follow-up round following an initial census, and have at least one follow-up round per year.
2. Collect data on the core components of demography and health – births, deaths, migrations and pregnancy monitoring.
3. Implement verbal autopsies on death.
4. Provide minimum datasets annually to INDEPTH Secretariat (based on point 2). The lag time for is for a minimum of 3 years. For instance, 2010 data must be submitted by 2013.
5. Be prepared to contribute data to cross-site research.

Criteria for Full Membership of INDEPTH - 2

- **Full members must:**

6. Not need financial support from the Network for HDSS core operations
7. Be prepared to **fully fund** leader's participation at the annual AGM and the bi-annual ISCs
8. Complete member centre questionnaire annually
9. Submit at least 1 abstract to the bi-annual ISC
10. Be encouraged to acknowledge INDEPTH membership in publications; Mandatory for INDEPTH-supported projects - acknowledgement of INDEPTH
11. Submit centre's policy on data sharing

- **Associate membership**

Any HDSS centre that has not yet met full membership criteria – i.e. an HDSS that is aspiring to full membership of INDEPTH

Down-grading Membership

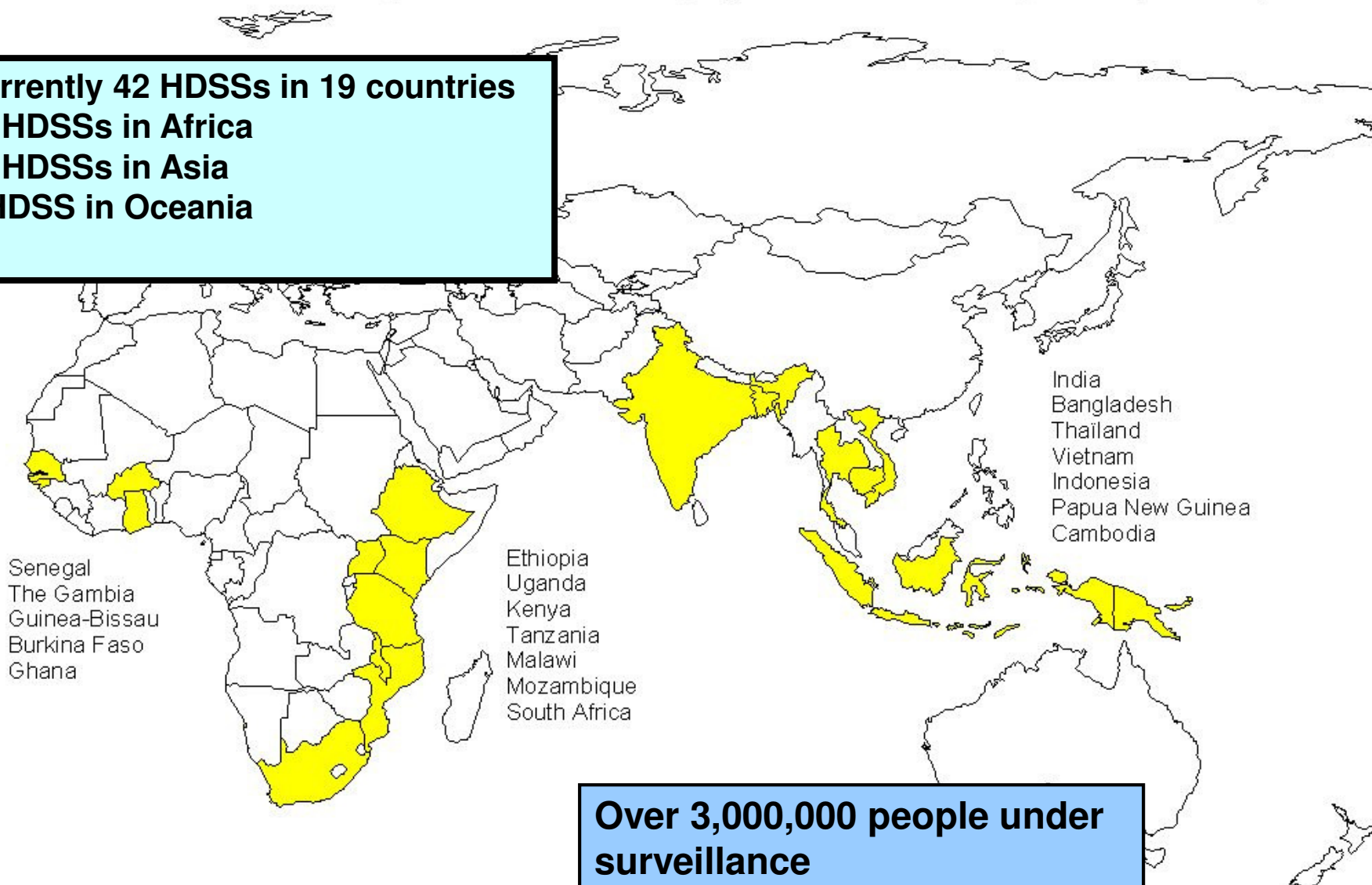
- Each year, before June 30, each Centre will be assessed.
- If a Centre has not fulfilled the above 11 criteria, the Centre will be down-graded to Associate Member for that year, until the next assessment the following June.
- All Full Members will receive a Certificate of Full Membership at the AGM, valid for one year.
- The Secretariat will prepare a table of Centre by Membership, listing the reasons why a Centre did not meet Full Membership Criteria, and will present this to the Board at the time of the AGM.

What INDEPTH does...

- Support and strengthen the ability of INDEPTH member centres to **conduct longitudinal health and demographic studies** in defined populations.
- Facilitate the translation of INDEPTH findings to maximise **impact on policy and practice**.
- Facilitate and support research **capability strengthening** relevant to INDEPTH activities.
- Stimulate and co-ordinate **multi-centre applications** to research funding bodies for specific research activities.

*Low- and Middle-Income Countries with INDEPTH member centres
Running Health and Demographic Surveillance Systems (HDSSs)*

**Currently 42 HDSSs in 19 countries
29 HDSSs in Africa
12 HDSSs in Asia
1 HDSS in Oceania**



List of current member HDSSs

Africa

Africa Centre, Agincourt, Dikgale
(South Africa - **3**)

Dodowa, Kintampo, Navrongo
(Ghana - **3**)

Karonga (Malawi - **1**)

Kaya, Nanoro, Nouna,
Ouagadougou, Sapone (Burkina
Faso - **5**)

Kilifi, Kisumu, Mbita, Nairobi (Kenya
- **4**)

Niakhar, Mlomp, Bandafassi
(Senegal - **3**)

Farafenni, West Kiang (The Gambia
- **2**)

Bandim (Guinea Bissau - **1**)

Iganga/Mayuge, Rakai (Uganda - **2**)

Africa cont.

Ifakara, Magu, Rufiji (Tanzania - **3**)

Butajira (Ethiopia - **1**)

Manhica (Mozambique - **1**)

Asia

Ballabgarh, Vadu (India - **2**)

Purworejo (Indonesia - **1**)

Chililab, Dodalab, Filabavi
(Vietnam - **3**)

Kanchanaburi (Thailand - **1**)

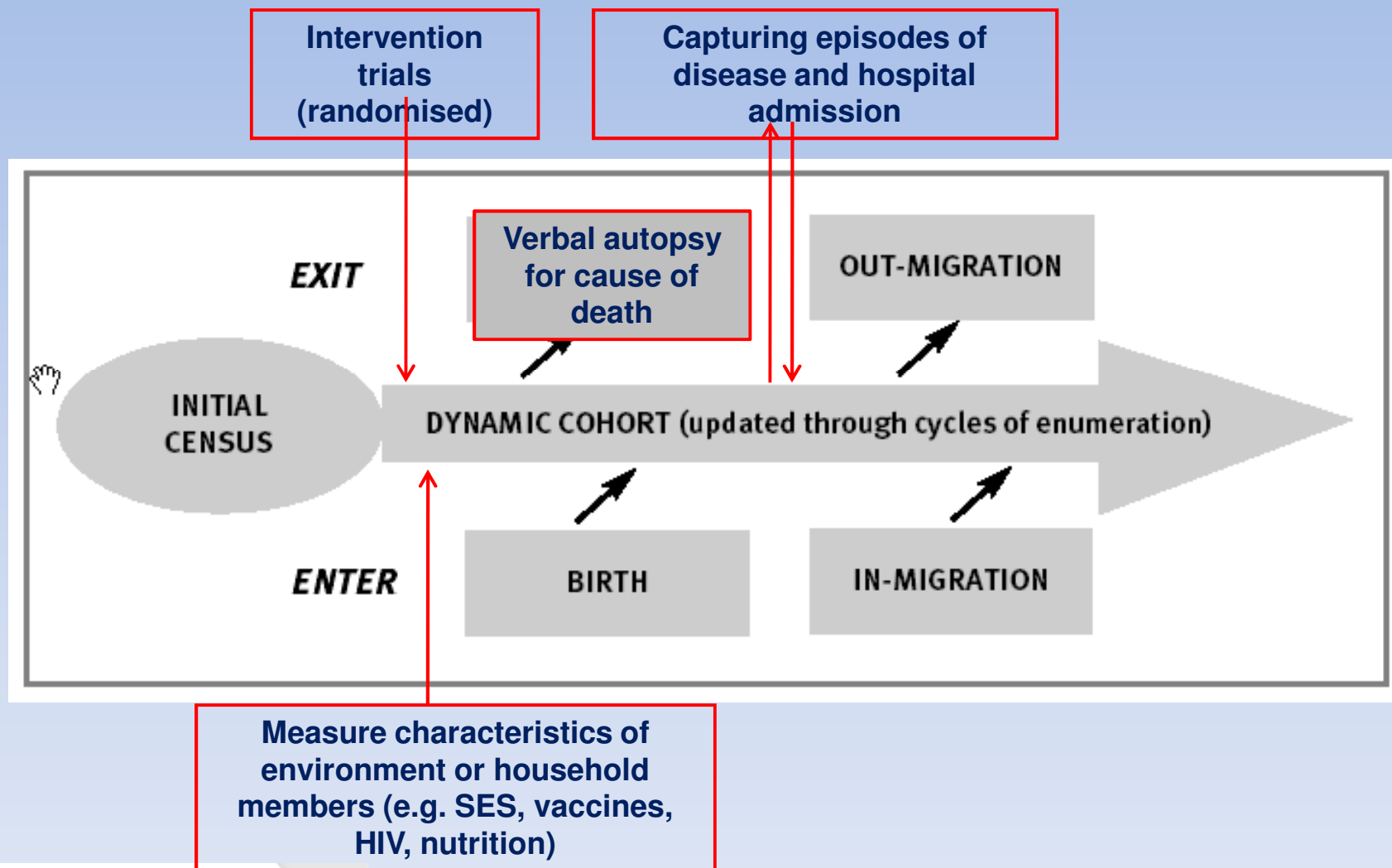
Mekong (Cambodia - **1**)

Matlab, AMK, Chakaria,
Bandarban (Bangladesh - **4**)

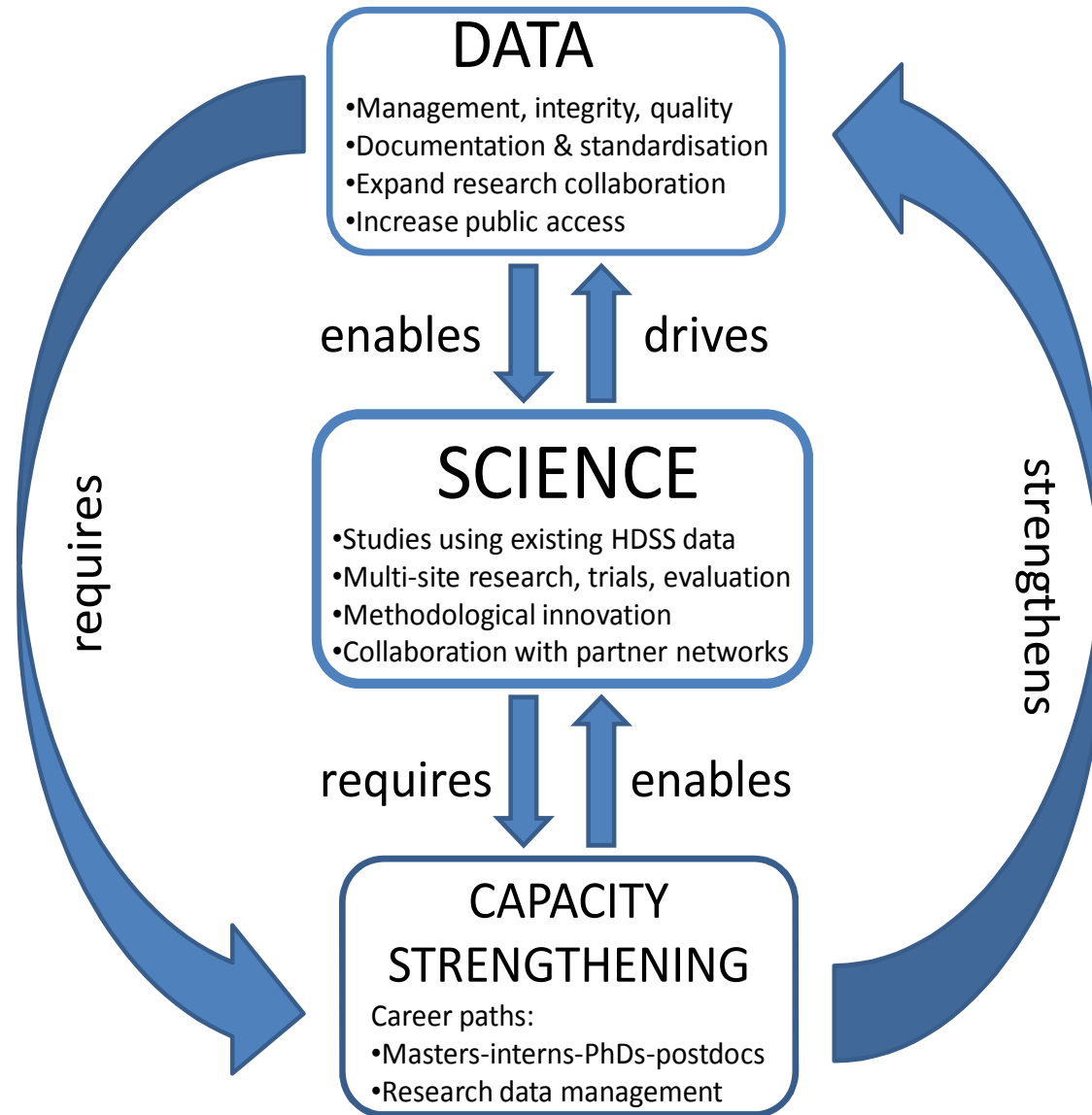
Oceania

Wosera (Papua New Guinea - **1**)

Prospective monitoring of demographic and health events



Our Core Business



The Science of INDEPTH

- The Scientific Advisory Committee
 - Helps INDEPTH to stay focused on our core business
 - Advises on various issues related to the overall scientific agenda of INDEPTH (reviews of abstracts for ISC, proposals, working groups, etc)
- Prof. David Ross will step down as Chair of the SAC
- Prof. Peter Byass will take over as Chair
- Dr Rosalia Sciortinio will remain the Vice Chair
- SAC reports to the Board

Working & Interest Groups - 1

1. Working Groups

- Many Working Groups active & productive:
 - Adult health & ageing, Migration & urbanization, Vaccination & child survival, Antibiotic resistance, TB, Mortality analysis, Cause of death determination, Indoor air pollution, Mental health & neurology, Climate change
- Some require more support:
 - Health systems, Sexual & Reproductive Health, Ethics, Fertility

2. Interest Groups

- All making good progress
 - Newborn health & epidemiology, Social Autopsy, Vaccine Safety, Household Dynamics

Working & Interest Groups - 2

Way forward:

1. We will ensure strong leadership of working groups.
2. INDEPTH funding and human resources will be restricted to groups and projects that directly relate to our core business.

Quality Issues

1. Data quality

- Support member centres as much as possible to improve data quality
- Data quality checks must be thorough and well-documented
- Only include in INDEPTHStats data that have been checked and approved by the centres (Feedback is VERY important)
- Develop data-check templates or use existing ones
 - **Somnath Sambhudas, our INDEPTH fellow in Vadu is working in this direction**

2. Support capacity in HDSSs

- Researchers or data managers should be able to critically analyze the data and spot major problems (e.g. impossible fertility or mortality patterns)

Innovation - 1

1. New data platforms must be rigorously tested & then, if successful, promoted

- Open HRS
- Others?

2. Data linkage technologies

- Linking HDSS and health facility data
- INESS centres are doing something unique
- What are you doing at your centres?
- The Secretariat will organise a methods-sharing workshop

Innovation - 2

3. iSHARE development and rollout - very important

- www.indepth-ishare.org
- 10 HDSSs currently on iSHARE
- Sida/GLOBFORSK, Hewlett Foundation
- Thanks also to other funders who provide core support
- Wellcome Trust (within Strategic Award)

Focus

- 1. We will be more rigorous in restricting Secretariat's effort & resources to groups & projects that directly relate to INDEPTH core business**
 - Multi-HDSS studies that directly require longitudinal monitoring of births, deaths by cause, & migration
- 2. We will rigorously enforce rules for full and associate membership**
- 3. We will institute some form of centre accreditation as part of this**

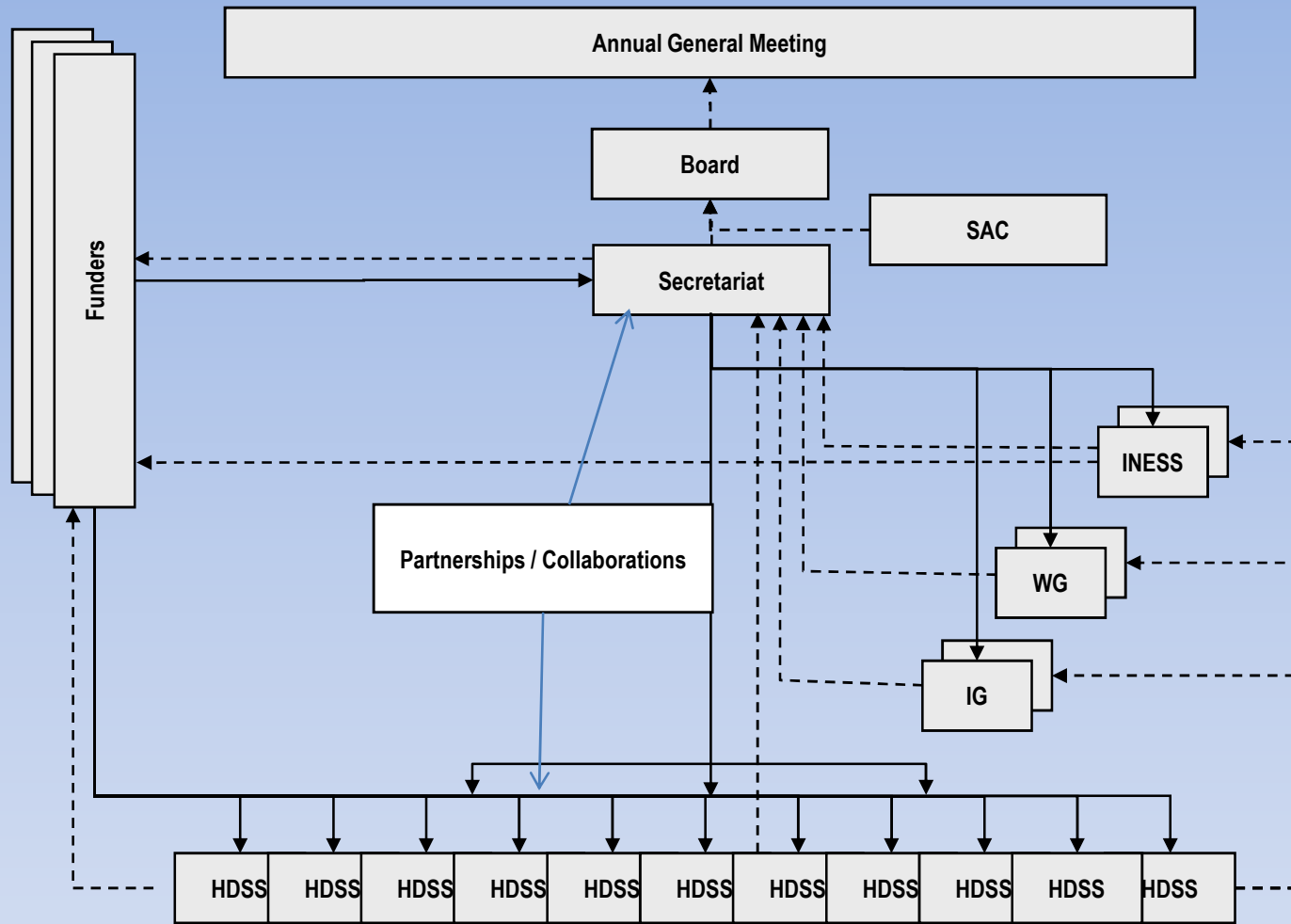
Capacity strengthening activities

- Young Investigators to the ISC
- MSc programme at Wits
- Move to PhD sponsorship
- Scientific writing and data analysis workshops
- Posting INDEPTH fellows to member centres
- Mentorship (SAC and other experts)
- Improving data quality
- Standardising methods and tools

Please contact Dr. Martin Bangha for more information

Challenge: funding

Administration and Co-ordination



→ Funding line
 - - - Reporting line

The Board of Trustees

- Members
 - Dr. Kayla Laserson (Chair)
 - Dr. Sanjay Juvekar (Vice)
 - Dr. Andreas Heddini
 - Prof. Peter Aaby
 - Dr. Ali Sie
 - Dr. Honorati Masanja
 - Dr. Margaret Gyapong
 - Prof. Marcel Tanner
 - Dr. Tim Evans
 - Prof. David Ross
 - Dr. Osman Sankoh
 - Dr Kofi Baku (Secretary)

Please step forward and be part of the team that provides oversight and ensures more accountability of Network activities

Strengthening Transparency

- Selection of member centres for INDEPTH multi-centre Projects
 - Based on the type of projects
 - Criteria for selection
- Selection of participants for INDEPTH workshops and other activities
 - We depend on centre leaders who nominate their staff
 - Please send the right people to INDEPTH workshops

INDEPTH Data Sharing Efforts

- INDEPTH Data Sharing and Access Committee
 - Dr. Alex Ezeh (Chair), Dr. Kayla Laserson (Vice Chair)
- Set the policies for
 - Data release periods
 - Type of data (Project / Core HDSS)
- Organised a workshop on the Ethics of Data Sharing
- Provide details of capacities that should be built/strengthened
- iSHARE / INDEPTHStats – more data visualisation
- INDEPTH WHO-SAGE Study dataset available on the website

Monitoring and Evaluation

- Online M&E Surveys for the Board, SAC, Working Groups, Secretariat
- INDEPTH Member Survey Questionnaire
 - *Dr. Kobus Herbst and colleagues*
- Should be completed every year
- 2010 external evaluation of INDEPTH available on the website (Sida website too!)
- INDEPTH HRWeb
 - Online analysis of what exists at member centres

Financial Matters

- PWC will present the audited financial report
- Sixtus Apaliyah, our Finance and Admin Manager, will present the state of the Network's finances

Current Funders

- Sida/GLOBFORSK
 - Hewlett Foundation
 - Gates Foundation
 - Wellcome Trust
 - DANIDA
 - IDRC
 - Health Metrics Network
 - European Union
 - Rockefeller Foundation
-
- Funders session yesterday was quite productive
 - Invite centre-specific funders to our ISCs

Grants Administration

- Contracts and MOUs
 - Lawyer assists
- Reports
- Requirements
- No funds to centres that have outstanding reports to submit
- Our accountants will visit member centres to 'chat' about the stringent IPSAS conditions which INDEPTH has accepted to operate by. Please 'smile' to them when they come.

Message from the INDEPTH Secretariat

Please always visit

www.indepth-network.org

For more information on the Network.

We are in Accra to serve you....

INDEPTH Network



- BETTER HEALTH INFORMATION FOR BETTER HEALTH POLICY



So... Doing INDEPTH Business...

*As... but frankly
not completely
...as usual!*

Focus, Quality, Innovation





Thank you

INDEPTH Network



- BETTER HEALTH INFORMATION FOR BETTER HEALTH POLICY