



# The State of the Network

@ the end of 2011

Dr. Osman Sankoh  
*Executive Director*

**On behalf of the Board Chair**

**26 October 2011 @ AGM, Maputo**





# Doing INDEPTH Business...

*As... but not completely  
...as usual!*

**Focus, Quality, Innovation**



# Outline of the Address

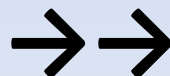
- Network Activities
  - Some definitions
  - Scientific
  - Capacity Strengthening and Training
  - Administrative
  - Financial
- Key Messages
  - from the Board
  - from the SAC
  - from the Secretariat

# Some Definitions – AGM vs. ISC

- The Annual General Meeting (AGM) – administrative business of the organisation
  - Centre leaders meet annually
  - Elect members of the Board of Trustees
- The INDEPTH Scientific Conference (ISC)
  - Scientific forum of the Network
  - **Once every two years**
    - Focus on improving science
    - Ability to look for more funding for the conference
    - Next ISC will take place in 2013
  - Reducing cost of the ISC
  - Not necessarily meet in a country with an INDEPTH HDSS member centre

## Some Definitions – HDSS Centre vs. HDSS Field Site

- HDSS Centre – Parent Institution which runs the HDSS field site
- An HDSS Centre may have one or more HDSS field sites (HDSSs) not independent of the Centre
- Applicant for INDEPTH membership is the parent institution / designee
- Director or designee of parent institution receives funds and signs on all subgrants from INDEPTH
- Same core funding raised by parent institution to run all 2 or more field sites
- All staff paid by parent institution
- All or most senior staff housed in parent institution's premises
- Designated leaders for INDEPTH for the two or more HDSSs are paid by and housed in the parent institution
- Parent institution involved in nearly day-to-day running of the field sites (HDSSs)



# HDSS Centre vs. HDSS Field Site – The Implications

- Only the parent institution or a designee may vote for Board members and resolutions at the AGM
- Only the director of the parent institution or a designee can be the INDEPTH Centre Leader
- Only the director may commit to data sharing
- Designated heads of HDSSs are only ALTERNATE CONTACTS but not Centre Leaders
- Only one alternate contact may be voted for at a time to serve on the Board; he/she must have written recommendation by the Centre Leader, especially where the Centre Leader himself/herself is not taking part. Where the Centre Leader is interested, no alternate contact may stand for election
- We count the INDEPTH members as the CENTRES running the HDSSs but not the HDSSs
- We list the number of HDSSs separately.
- Each HDSS may nominate a participant to INDEPTH workshops to handle their

# Criteria for Full Membership of INDEPTH - 1

- **Full members must:**

1. Operate an HDSS – at the minimum, have had at least one follow-up round following an initial census, and have at least one follow-up round per year.
2. Collect data on the core components of demography and health – births, deaths, migrations and pregnancy monitoring.
3. Implement verbal autopsies on death.
4. Provide minimum datasets annually to INDEPTH Secretariat (based on point 2). The lag time for is for a minimum of 3 years. That is, 2010 data must be submitted by 2013.
5. Be prepared to contribute data to cross-site research.

# Criteria for Full Membership of INDEPTH - 2

- **Full members must:**

1. Not need financial support from the Network for HDSS operations.
2. Be prepared to **fully fund** leader's participation at the annual AGM and the bi-annual ISCs.
3. Complete member centre questionnaire annually.
4. Submit at least 1 abstract to the bi-annual ISC.
5. Be encouraged to acknowledge INDEPTH membership in publications; Mandatory for INDEPTH-supported projects acknowledgement of INDEPTH
6. Submit centre's policy on data sharing

- **Associate membership**

Has not yet met full membership criteria – HDSS aspiring to full membership



# Down-grading Membership

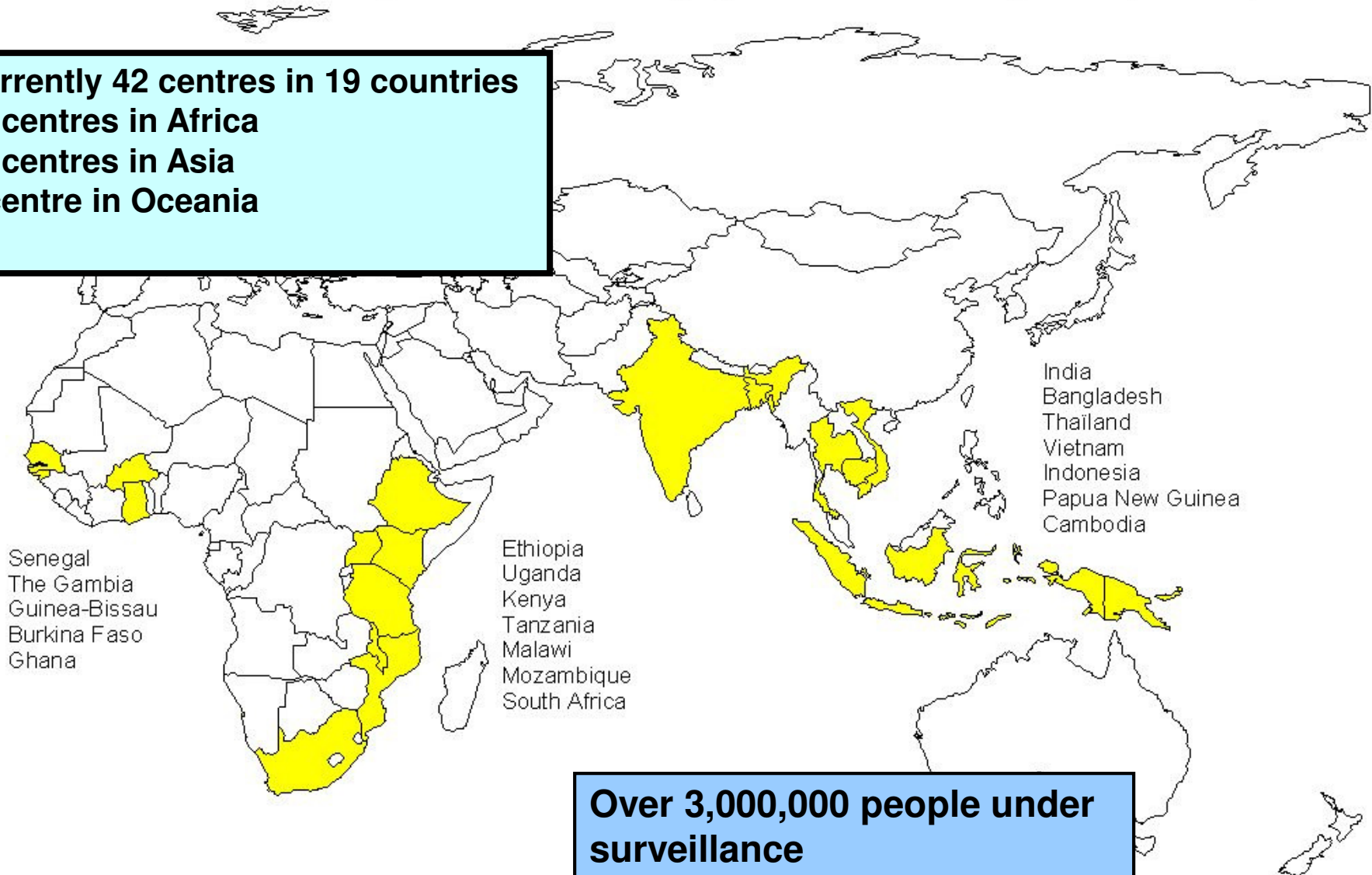
- Each year, before June 30, each Centre will be assessed.
- If a Centre has not fulfilled the above 10 criteria, the Centre will be down-graded to Associate Member for that year, until the next assessment the following June.
- All Full Members will receive a Certificate of Full Membership at the AGM, valid for one year.
- The Secretariat will prepare a table of Centre by Membership, listing the reasons why a Centre did not meet Full Membership Criteria, and will present this to the Board at the time of the AGM.

# What INDEPTH does...

- Support and strengthen the ability of INDEPTH member centres to **conduct longitudinal health and demographic studies** in defined populations.
- Facilitate the translation of INDEPTH findings to maximise **impact on policy and practice**.
- Facilitate and support research **capability strengthening** relevant to INDEPTH activities.
- Stimulate and co-ordinate **multi-centre applications** to research funding bodies for specific research activities.

*Low- and Middle-Income Countries with INDEPTH member centres  
Running Health and Demographic Surveillance Systems (HDSSs)*

**Currently 42 centres in 19 countries  
29 centres in Africa  
12 centres in Asia  
1 centre in Oceania**



**Over 3,000,000 people under surveillance**

# List of current member centres

## Africa

Africa Centre, Agincourt, Digkale  
(South Africa - **3**)

Dodowa, Kintampo, Navrongo  
(Ghana - **3**)

Karonga (Malawi - **1**)

Kaya, Nanoro, Nouna,  
Ouagadougou, Sapone (Burkina  
Faso - **5**)

Kilifi, Kisumu, Mbita, Nairobi (Kenya  
- **4**)

Niakhar, Mlomp, Bandafassi  
(Senegal - **3**)

Farafenni, West Kiang (The Gambia  
- **2**)

Bandim (Guinea Bissau - **1**)

Iganga/Mayuge, Rakai (Uganda - **2**)

## Africa cont.

Ifakara, Magu, Rufiji (Tanzania - **3**)

Butajira (Ethiopia - **1**)

Manhica (Mozambique - **1**)

## Asia

Ballabgarh, Vadu (India - **2**)

Purworejo (Indonesia - **1**)

Chililab, Dodalab, Filabavi  
(Vietnam - **3**)

Kanchanaburi (Thailand - **1**)

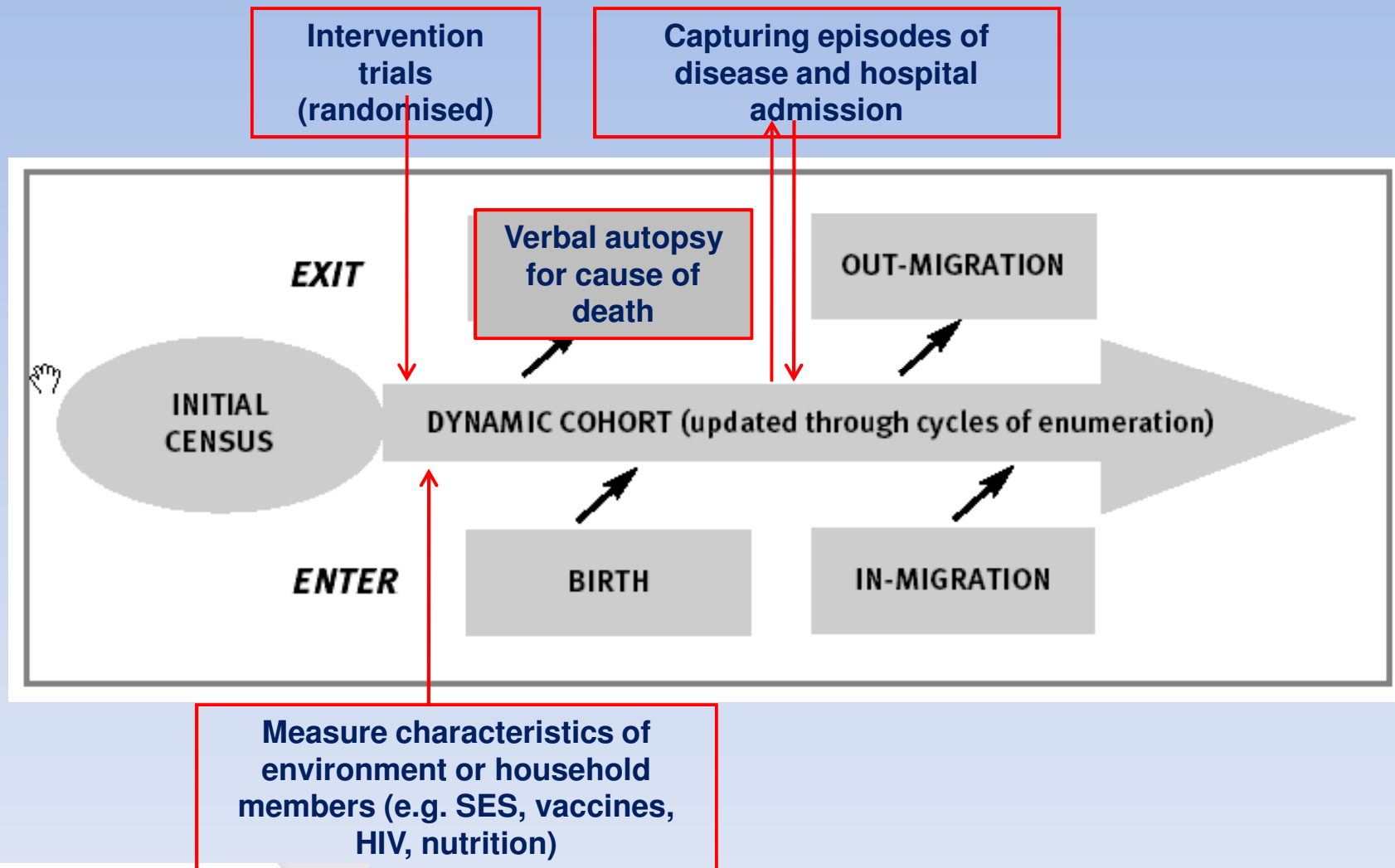
Mekong (Cambodia - **1**)

Matlab, AMK, Chakaria,  
Bandarban (Bangladesh - **4**)

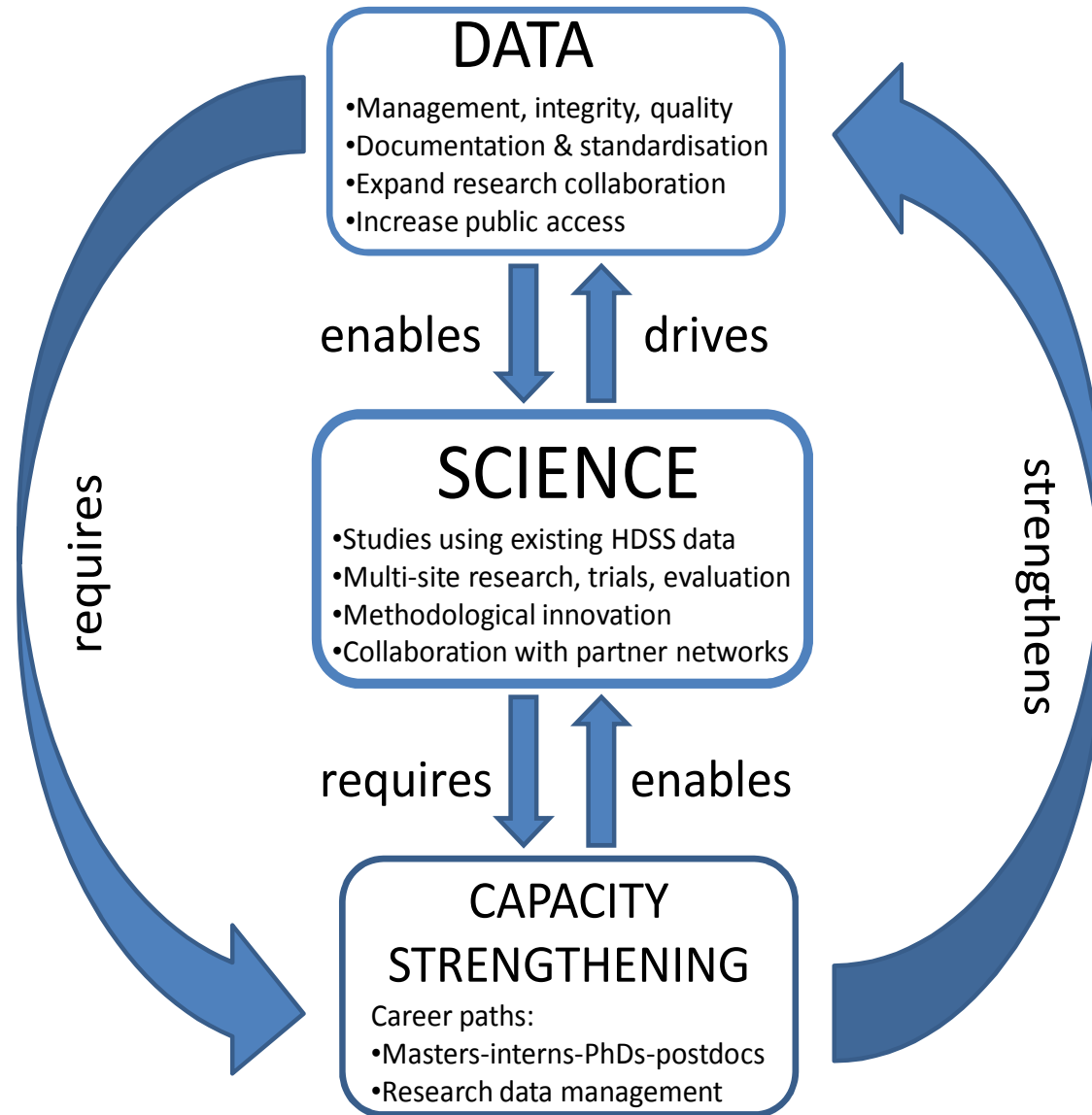
## Oceania

Wosera (Papua New Guinea - **1**)

# Prospective monitoring of demographic and health events



# Our Core Business



# The Science of INDEPTH

- The Scientific Advisory Committee
  - Helps INDEPTH to stay focused on our core business
  - Advises on various issues related to the overall scientific agenda of INDEPTH (reviews of abstracts for ISC, proposals, working groups, etc)
- Prof. David Ross will step down as Chair of the SAC
- Prof. Peter Byass will take over as Chair
- Dr Rosalia Sciortinio will remain the Vice Chair
- SAC reports to the Board

# Working & Interest Groups - 1

## 1. Working Groups

- Many Working Groups active & productive:
  - Adult health & ageing, Migration & urbanization, Vaccination & child survival, Antibiotic resistance, TB, Mortality analysis, Cause of death determination, Indoor air pollution, Mental health & neurology, Climate change
- Some require more support:
  - Health systems, Sexual & reproductive health, Ethics, Fertility

## 2. Interest Groups

- All making good progress
  - Newborn health & epidemiology, Social autopsy, Vaccine safety, Household dynamics



# Working & Interest Groups - 2

## Way forward:

1. We will ensure strong leadership of working groups.
2. INDEPTH funding and human resources will be restricted to groups and projects that directly relate to our core business.

# Quality Issues

## 1. Data quality

- Support member centres as much as possible to improve data quality
- Data quality checks must be thorough and well-documented
- Only include in PopStats data that have been checked and approved by the centres (Feedback is VERY important)
- Develop data-check templates or use existing ones
  - **Somnath Sambhudas, our INDEPTH fellow in Vadu is working in this direction**

## 2. Support capacity in HDSSs

- Researchers or data managers should be able to critically analyze the data and spot major problems (e.g. impossible fertility or mortality patterns)

# Innovation - 1

**1. New data platforms must be rigorously tested & then, if successful, promoted**

- Open HRS
- Others?

**2. Data linkage technologies**

- Linking HDSS and health facility data
- INESS centres and several others are doing something unique
- What are you doing at your centres?
- The Secretariat will organise a methods-sharing workshop

# Innovation - 2

## 3. iSHARE development and rollout - very important

- [www.indepth-ishare.org](http://www.indepth-ishare.org)
- 10 HDSSs currently on iSHARE
- Sida/GLOBFORSK, Hewlett Foundation
- Thanks also to other funders who provide core support
- Wellcome Trust (within Strategic Award)

# Focus

- 1. We will be more rigorous in restricting Secretariat's effort & resources to groups & projects that directly relate to INDEPTH core business**
  - Multi-HDSS studies that directly require longitudinal monitoring of births, deaths by cause, & migration
- 2. We will rigorously enforce rules for full and associate membership**
- 3. We will institute some form of centre accreditation as part of this**

# Capacity strengthening activities

- Young Investigators to the ISC
- MSc programme at Wits
- Move to PhD sponsorship
- Scientific writing and data analysis workshops
- Posting INDEPTH fellows to member centres
- Mentorship (SAC and other experts)
- Improving data quality
- Standardising methods and tools

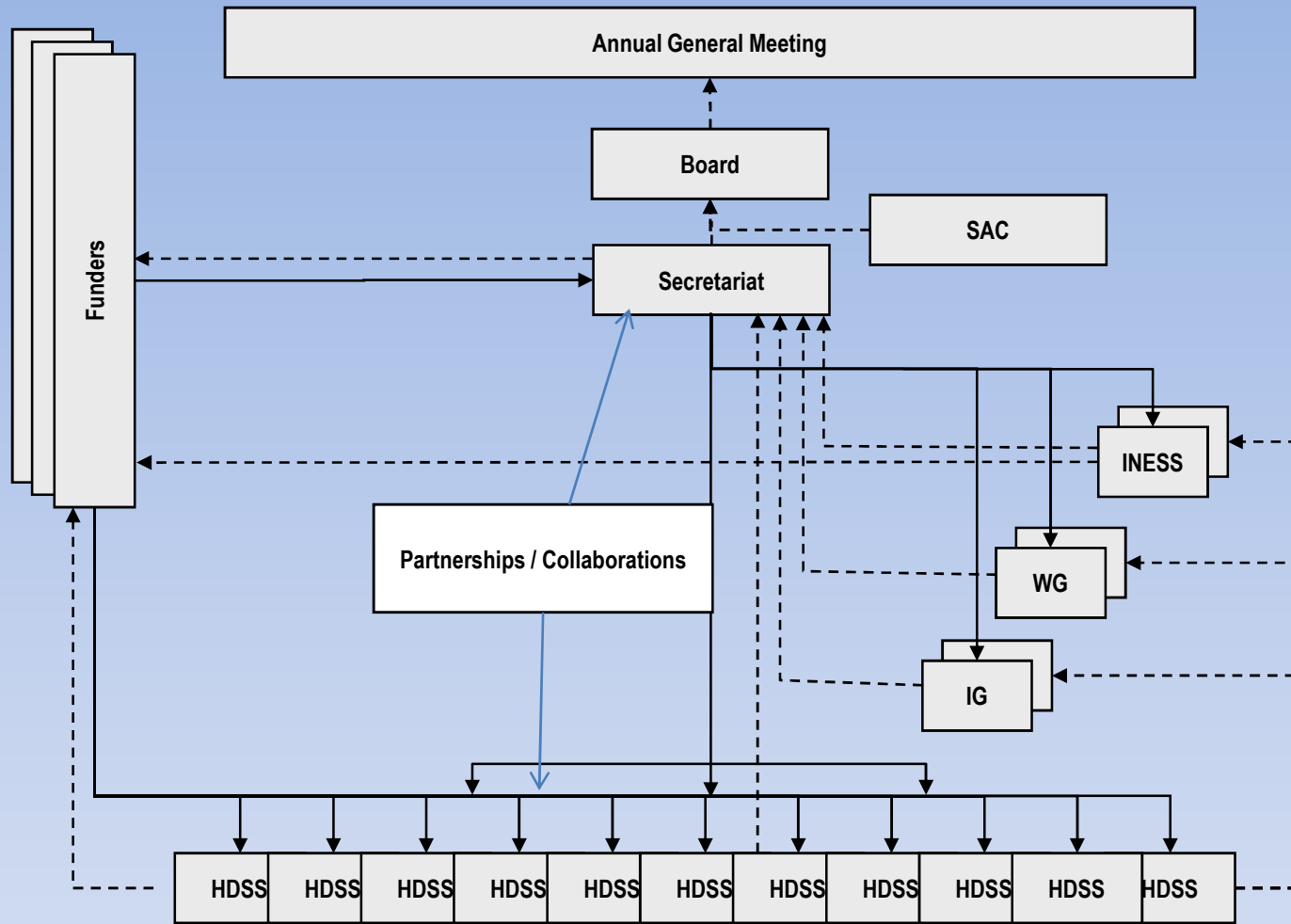
**Please contact Dr. Martin Bangha for more information**

## Challenge: funding

# Administration and Co-ordination

The Executive Director

- . Three years per term
- . Position automatically advertised at the end of the second term
- . Executive Director may re-apply



—→ Funding line  
 - - - - -→ Reporting line





# The Board of Trustees

- Members
  - Dr. Kayla Laserson (Chair)
  - Dr. Sanjay Juvekar (Deputy)
  - Dr. Andreas Heddini
  - Prof. Peter Aaby
  - Dr. Ali Sie
  - Dr. Honorati Masanja
  - Dr. Margaret Gyapong
  - Prof. Marcel Tanner
  - Dr. Tim Evans
  - Prof. David Ross
  - Dr. Osman Sankoh
  - Dr Kofi Baku (Secretariat)

*Please step forward and be part of the team that provides oversight and ensures more accountability of Network activities*

# Strengthening Transparency

- Selection of member centres for INDEPTH multi-centre Projects
  - Based on the type of projects
  - Criteria for selection
- Selection of participants for INDEPTH workshops and other activities
  - We depend on centre leaders who nominate their staff
  - Please send the right people to INDEPTH workshops

# INDEPTH Data Sharing Efforts

- INDEPTH Data Sharing and Access Committee
  - Dr Alex Ezeh (Chair), Dr. Kayla Laserson (Vice Chair)
- Set the policies for
  - Data release periods
  - Type of data (Project / Core HDSS)
- Organised a workshop on the Ethics of Data Sharing
- Provide details of capacities that should be built/strengthened
- iSHARE / PopStats – more data visualisation
- INDEPTH WHO-SAGE Study dataset available on the website

# Monitoring and Evaluation

- Online M&E Surveys for the Board, SAC, Working Groups, Secretariat
- INDEPTH Member Survey Questionnaire
  - *Dr Kobus Herbst and colleagues*
- Should be completed every year
- 2010 external evaluation of INDEPTH available on the website (Sida website too!)
- INDEPTH HRWeb
  - Online analysis of what exists at member centres

# Financial Matters

- PWC will present the audited financial report
- Sixtus Apaliyah, our Finance and Admin Manager, will present the state of the Network's finances

# Current Funders

- Sida/GLOBFORSK
  - Hewlett Foundation
  - Gates Foundation
  - Wellcome Trust
  - DANIDA
  - IDRC
  - Health Metrics Network
  - European Union
  - Rockefeller Foundation
- 
- Funders session yesterday was quite productive
  - Invite centre-specific funders to our ISCs

# Grants Administration

- Contracts and MOUs
  - Lawyer assists
- Reports
- Requirements
- No funds to centres that have outstanding reports to submit
- Our accountants will visit member centres to 'chat' about the stringent IPSAS conditions which INDEPTH has accepted to operate by. Please 'smile' to them when they come.

# Message from the INDEPTH Secretariat

Please always visit

[www.indepth-network.org](http://www.indepth-network.org)

For more information on the Network.

We are in Accra to serve you....





# So... Doing INDEPTH Business...

*As... but frankly  
not completely  
...as usual!*

## Focus, Quality, Innovation





Thank you