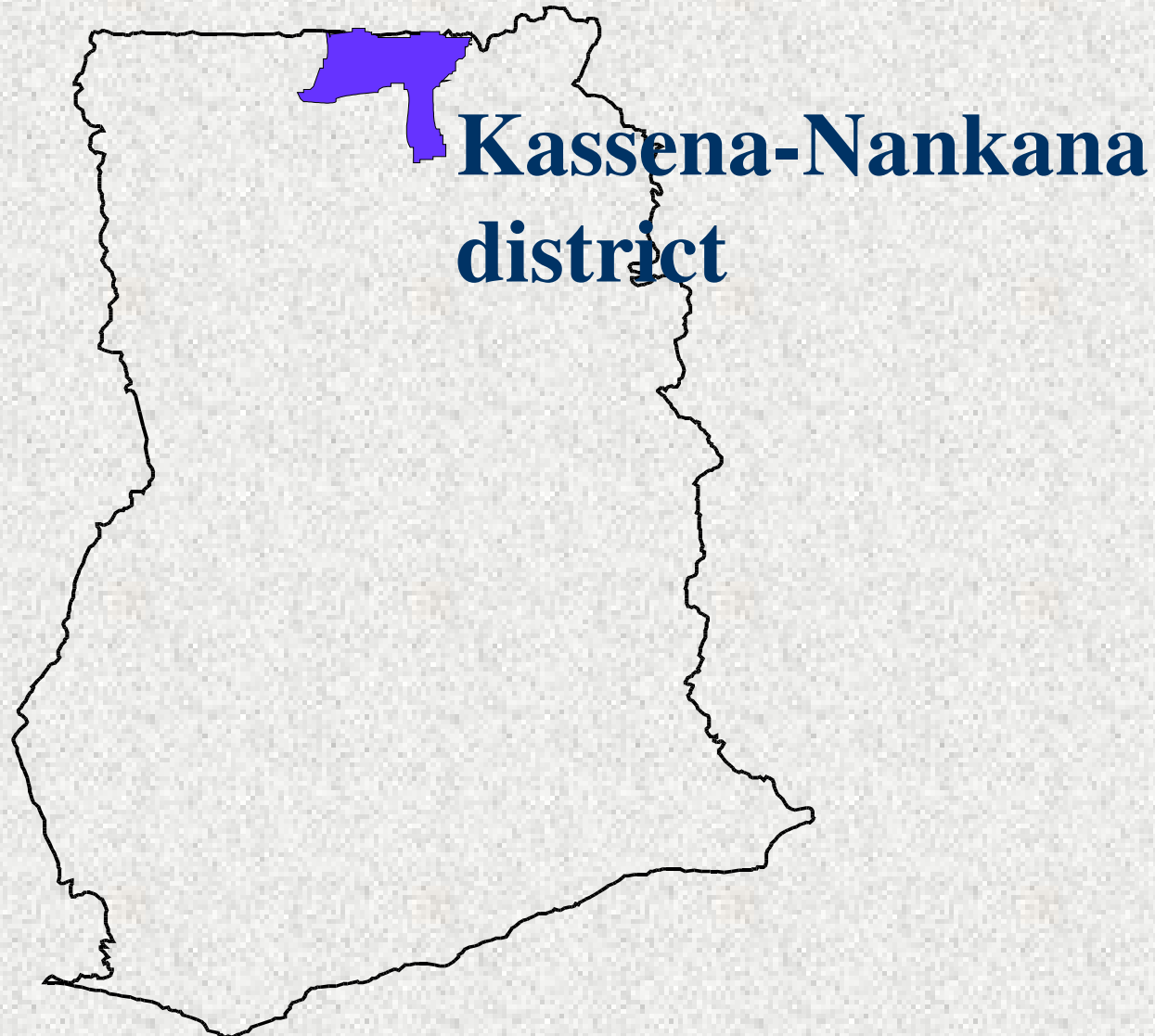


Overview of the Navrongo Health Research Centre



NHRC'S Location

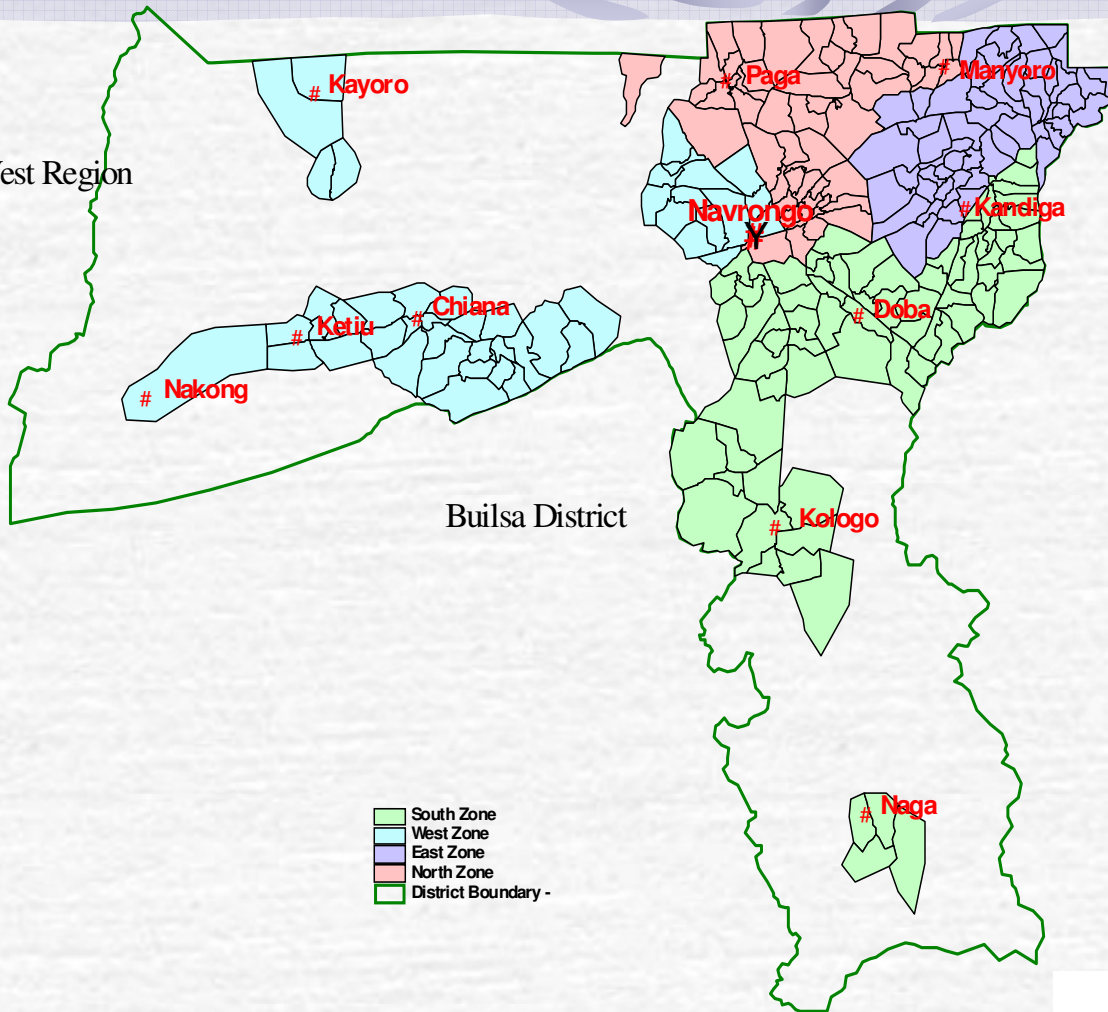


Kassena - Nankana District showing the major villages

Burkina Faso



Upper West Region



Bolga District

Builsa District

Northern Region

- South Zone
- West Zone
- East Zone
- North Zone
- District Boundary -



Characteristics of KIND

- **Area** - 1674 sq.km.
- **Population** - 150,000 (under surveillance)
82% Rural
- **Climate** - One rainy season (June-Oct.)
- Long dry season (Nov-May)
- **Vegetation** - Savannah
- **People** - Kassenas, Nankanis & Builsas



NHRC'S MANDATE

•To research into priority health problems facing the developing world and inform policy decisions on feasible interventions



Epidemiology of the Study population

- Malaria is the major cause of morbidity and death
- Diarrhoea and ARI also important causes of disease and death
- Periodic outbreaks of CSM (meningitis)



Research interest areas

- Malaria
- Diarrhoeal diseases
- Respiratory Infections
- Other communicable diseases
 - CSM, Schistosomiasis, Filariasis
- Reproductive health issues



Scientific staff of the NHRC

- **Epidemiologists**
- **Statisticians**
- **Biologists**
- **Demographers**
- **Social Scientists**
- **Health Economists**
- **Clinicians**



Completed Trials/Studies I

- Vitamin A Supplementation Trial
- Bednet Trial
- Malaria Attack Rate Studies
- Etaquine Trial
- Malarial Case Control Study
- Artesunate Trial
- IPTi & IPTp



Completed Trials/Studies II

- CHFP
- FGM
- Maternal Health Study
- Azithromycin/Chloroquine Studies
- Meningitis Vaccine Trial
- IPTi Acceptability
- Malaria RDT Studies
- Rotateq Trial



Ongoing Trials/Studies I

- Malarial epidemiological studies
- Cerebrospinal Meningitis Surveillance
- Human Rotavirus Vaccine Trial (RRV-TV)
- ASRH
- Schistosomiasis
- Meningitis vaccine trial II
- INESS
- Normal Values Study



On-going studies/Trials II

- MoTech
- Qualmat



The Navrongo HDSS



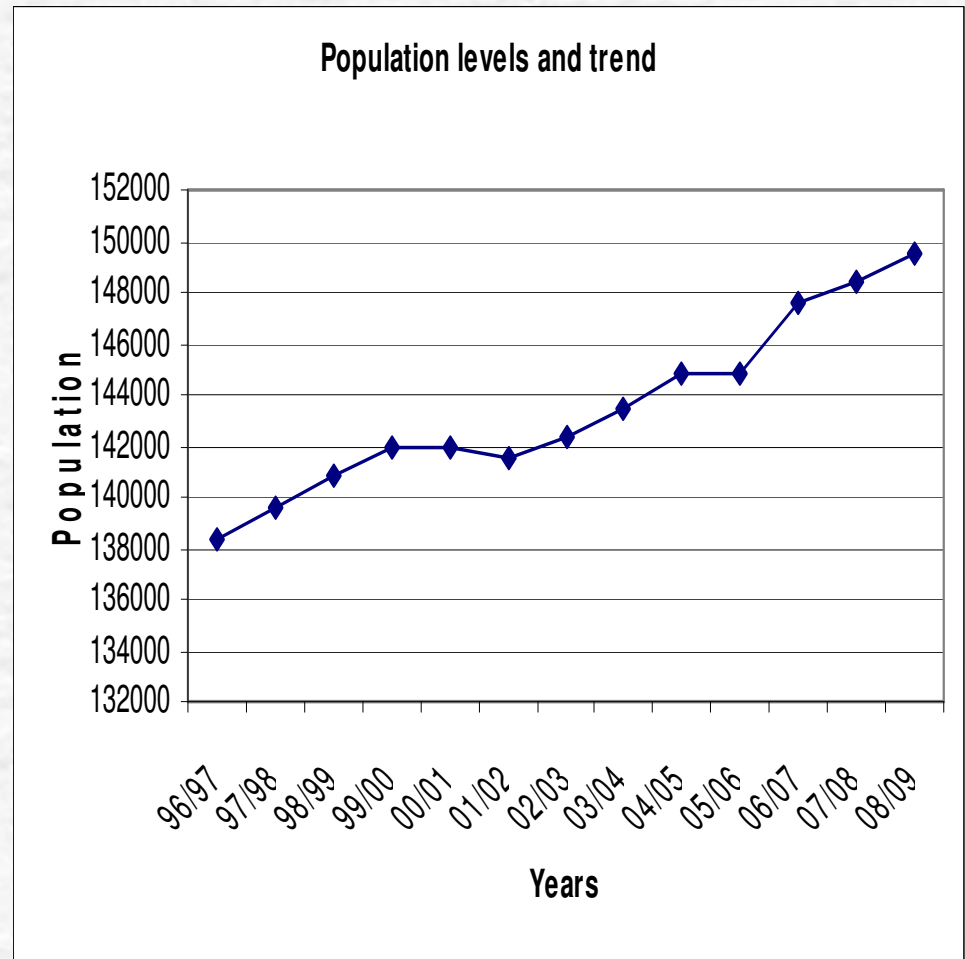
The Navrongo HDSS

- The success of all completed and ongoing projects is facilitated by the existence of the Navrongo HDSS.
- Fieldworkers visit each household periodically to collect and update the socio-demographic information of each individual.
- Information collected include births, deaths, pregnancies, migrations, vaccination, education, among others
- Verbal autopsies are also conducted on all deaths to ascertain the probable causes of deaths of the people.



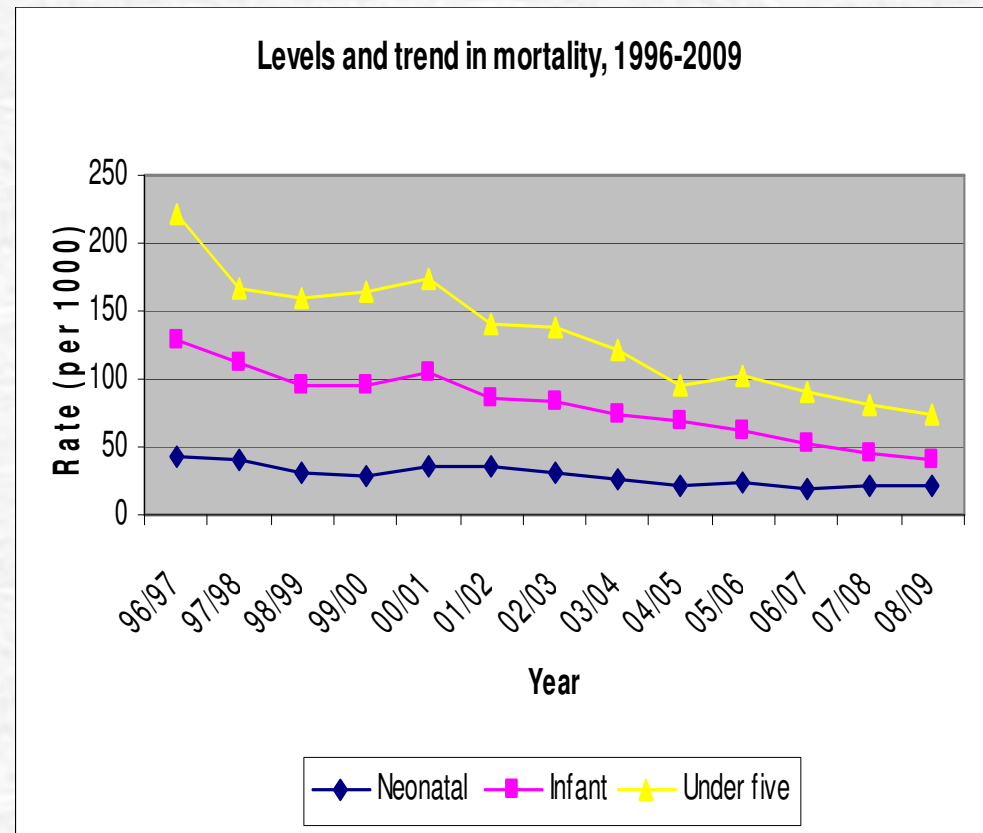
Population levels and trend

- Population continues to grow though not consistent.
- The growth rate has been less than 1% over the years.
- This has been due to the high net out migration from the district

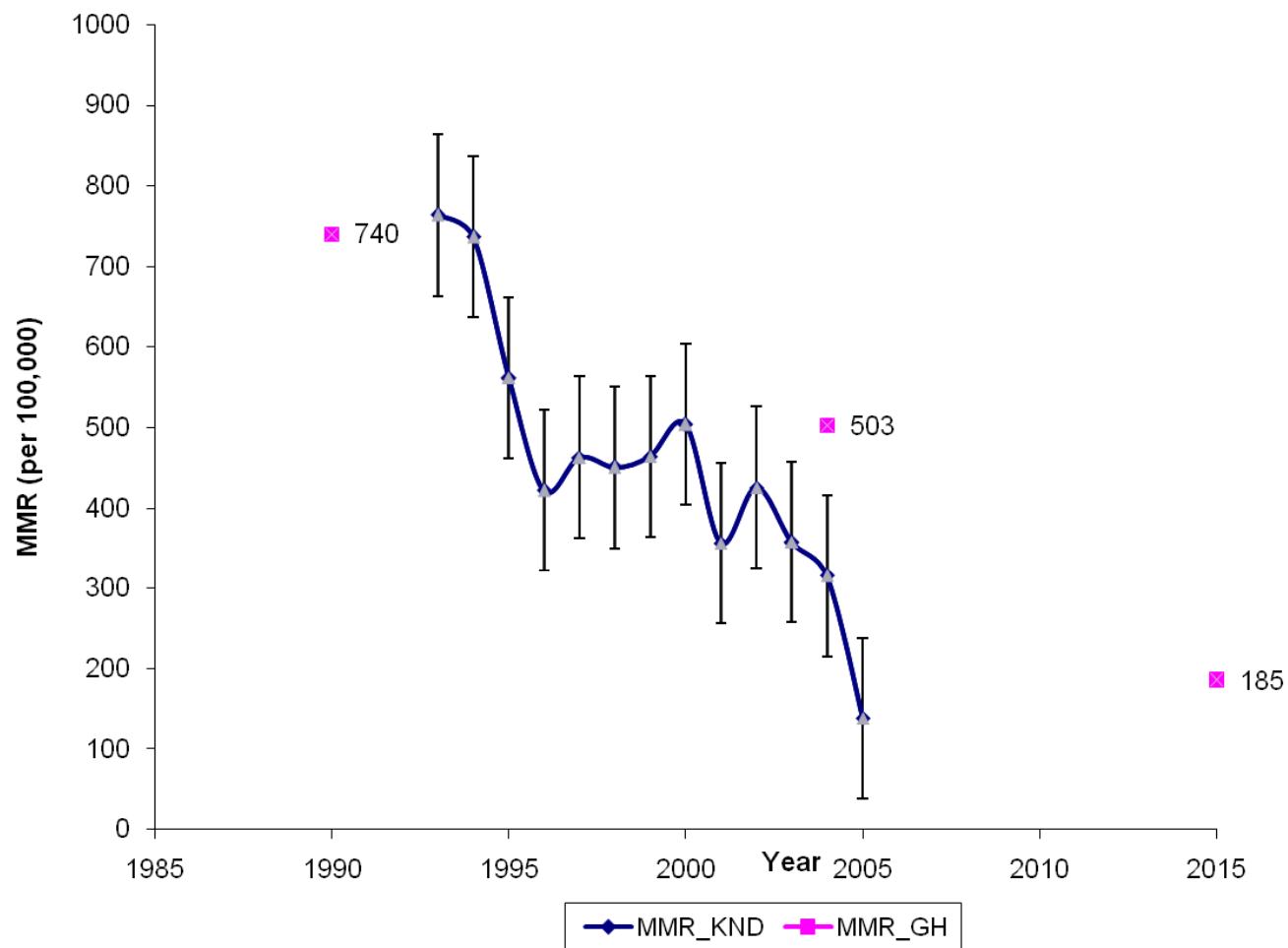


Neonatal, infant and child mortality rates

- Trends in all three have been on the decline.
- The decline is prominent in the infant and under five.

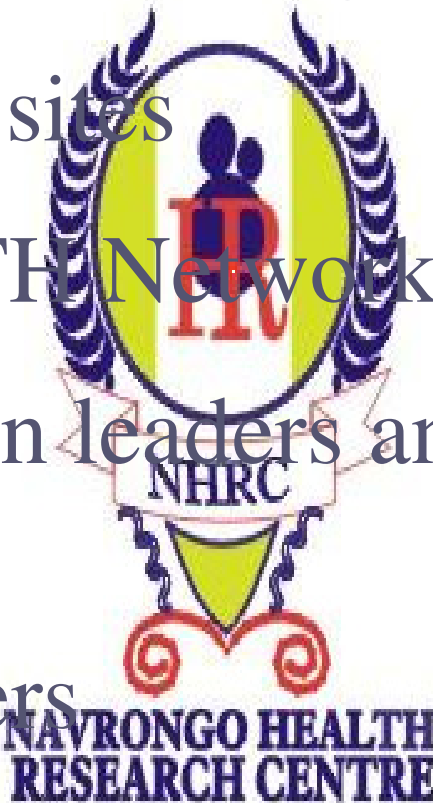


Trends in Maternal Mortality, Ghana and Kassena-Nankana District Compared, 1990-2015



Collaborations

- The Ghana Health Service
- District Health Management Team
- Other HDSS sites
- The INDEPTH Network
- Chief, opinion leaders and community members
- All our funders



Thanks for your attention

