



INDEPTH centres in South Africa

AginCourt: Kathleen Kahn

Africa Centre: Kobus Herbst

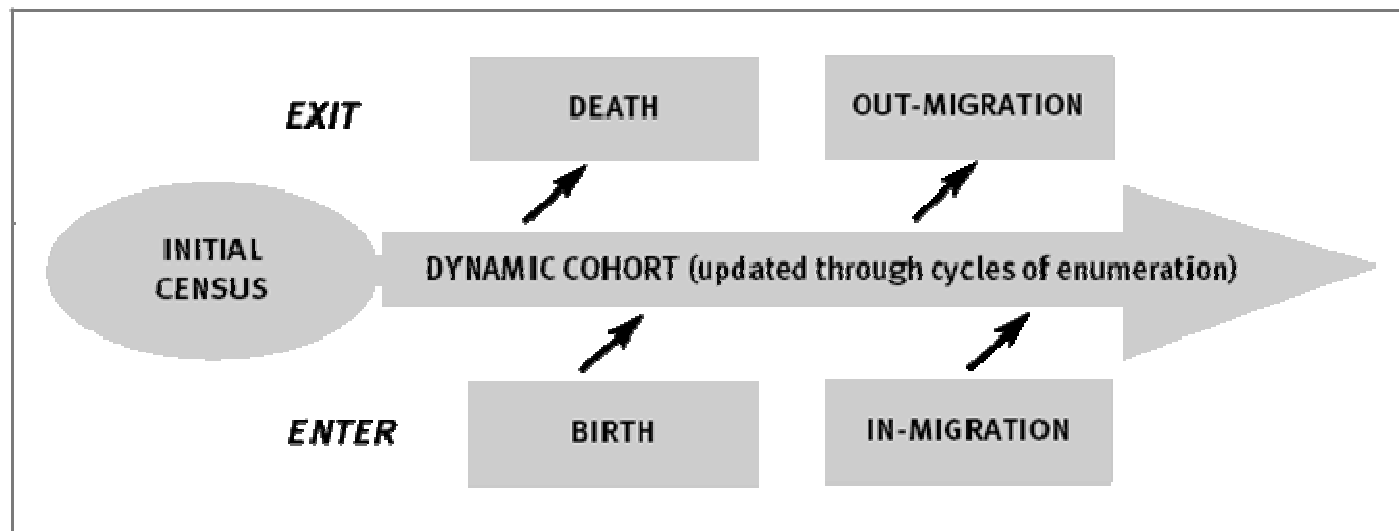
Dikgale: Marianne Alberts

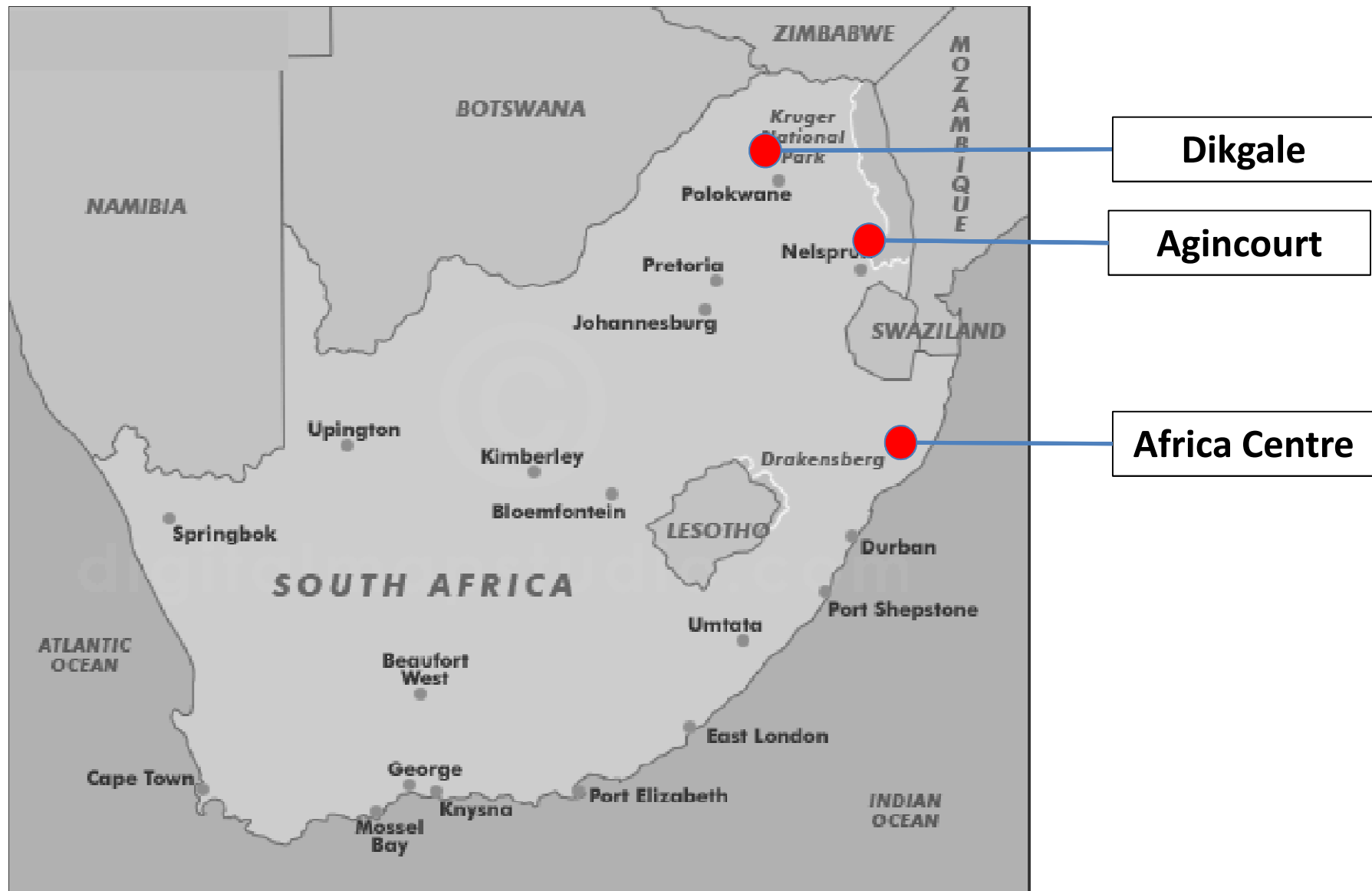


INDEPTH Network

What do HDSSs have in common?

- *Defining and registering a population*
- *Following community over time*
- *Recording all vital events*





INDEPTH Network

South African centres - rural

	Start	Population	Households	Communities	Language
Agincourt - Mpumalanga	1992	110,000	20,000	31 villages	Xitsonga
Dikgale - Limpopo	1995	35,000	6,700	15 villages	Sesotho
Africa Centre - KwaZulu-Natal	2000	85,000	11,000	scattered HHs + settlement	isiZulu

**INFANTS &
CHILDREN**



ADOLESCENTS



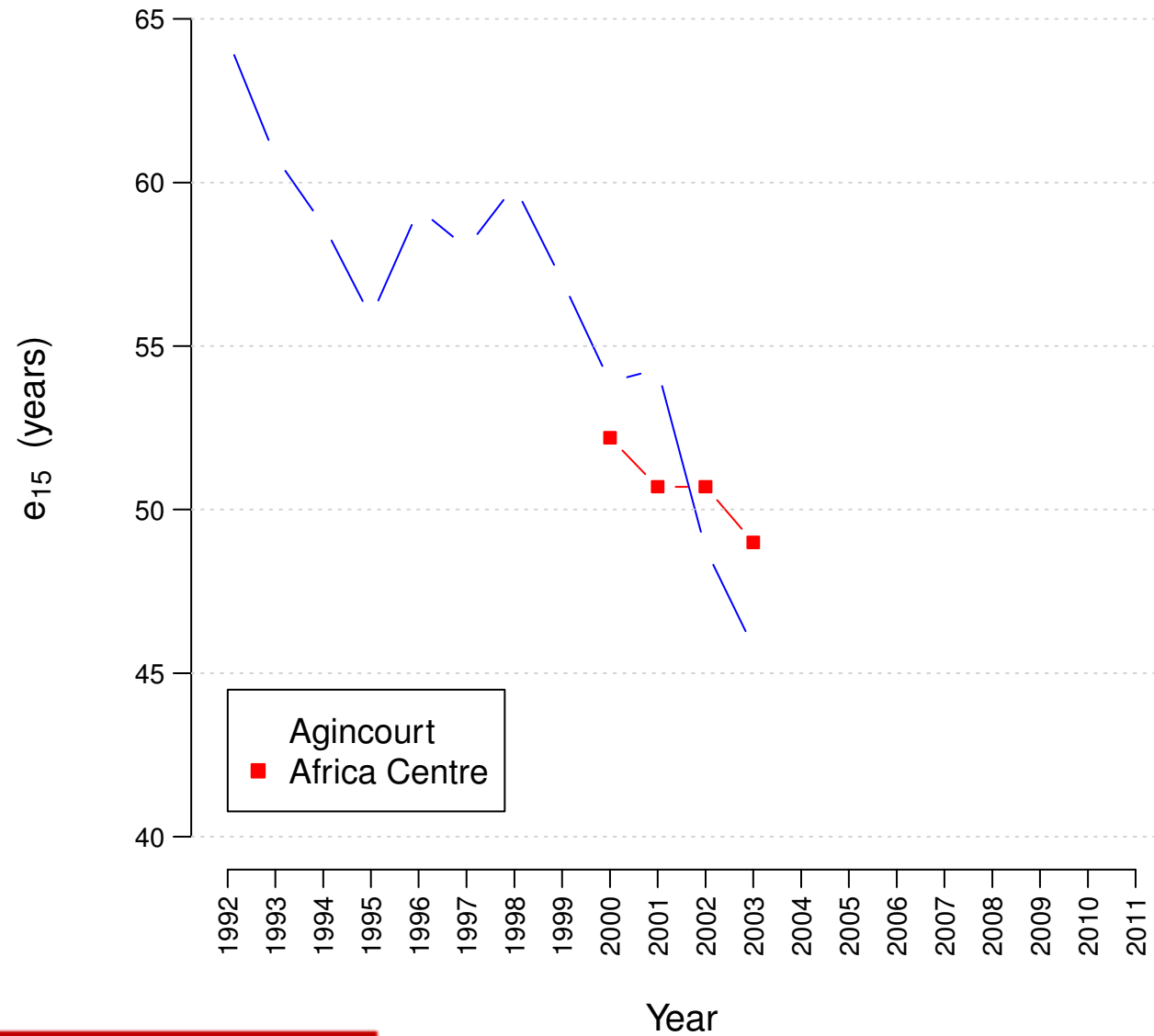
ADULTS



OLDER

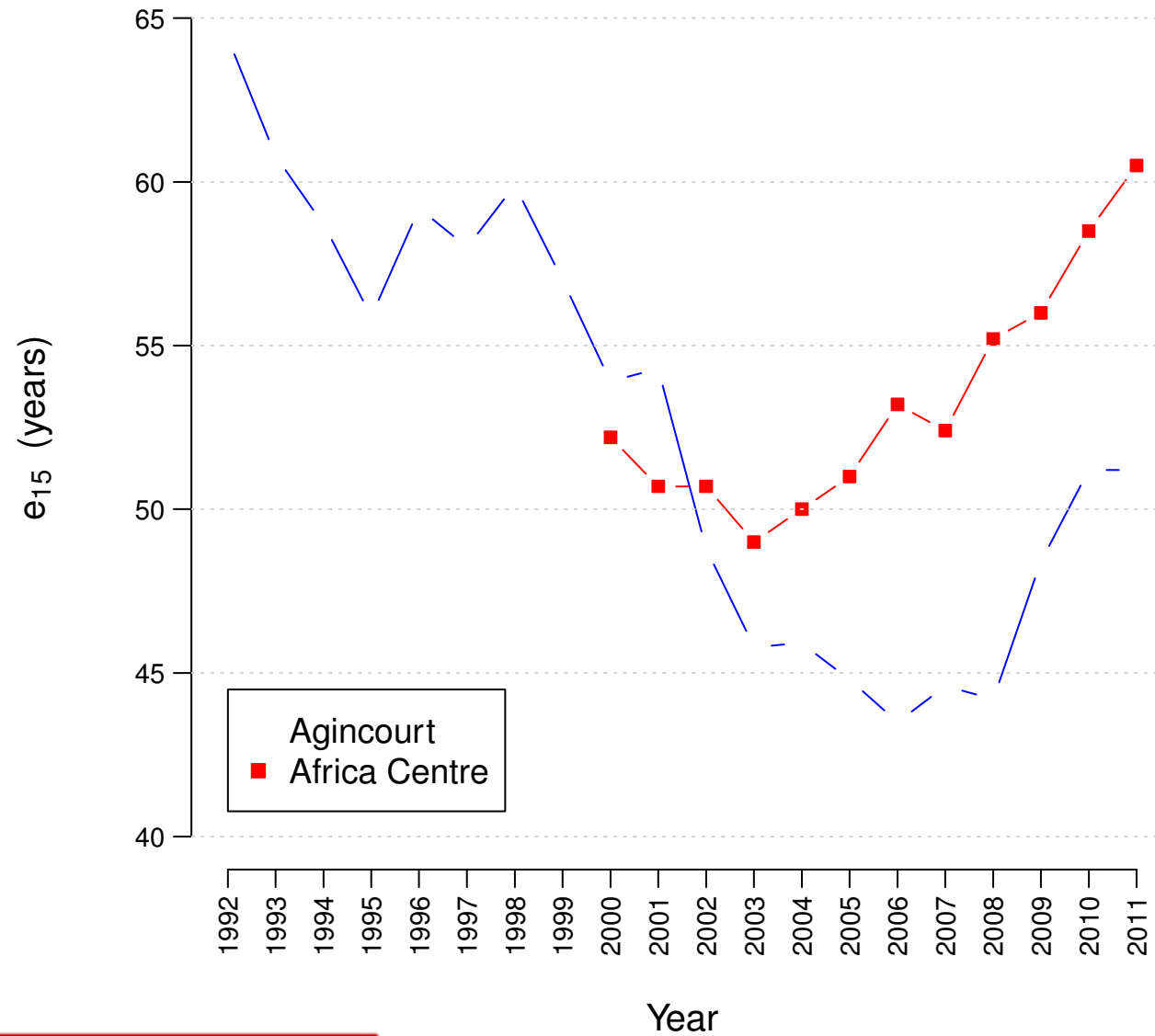


Expectation of Life at Age 15



INDEPTH Network

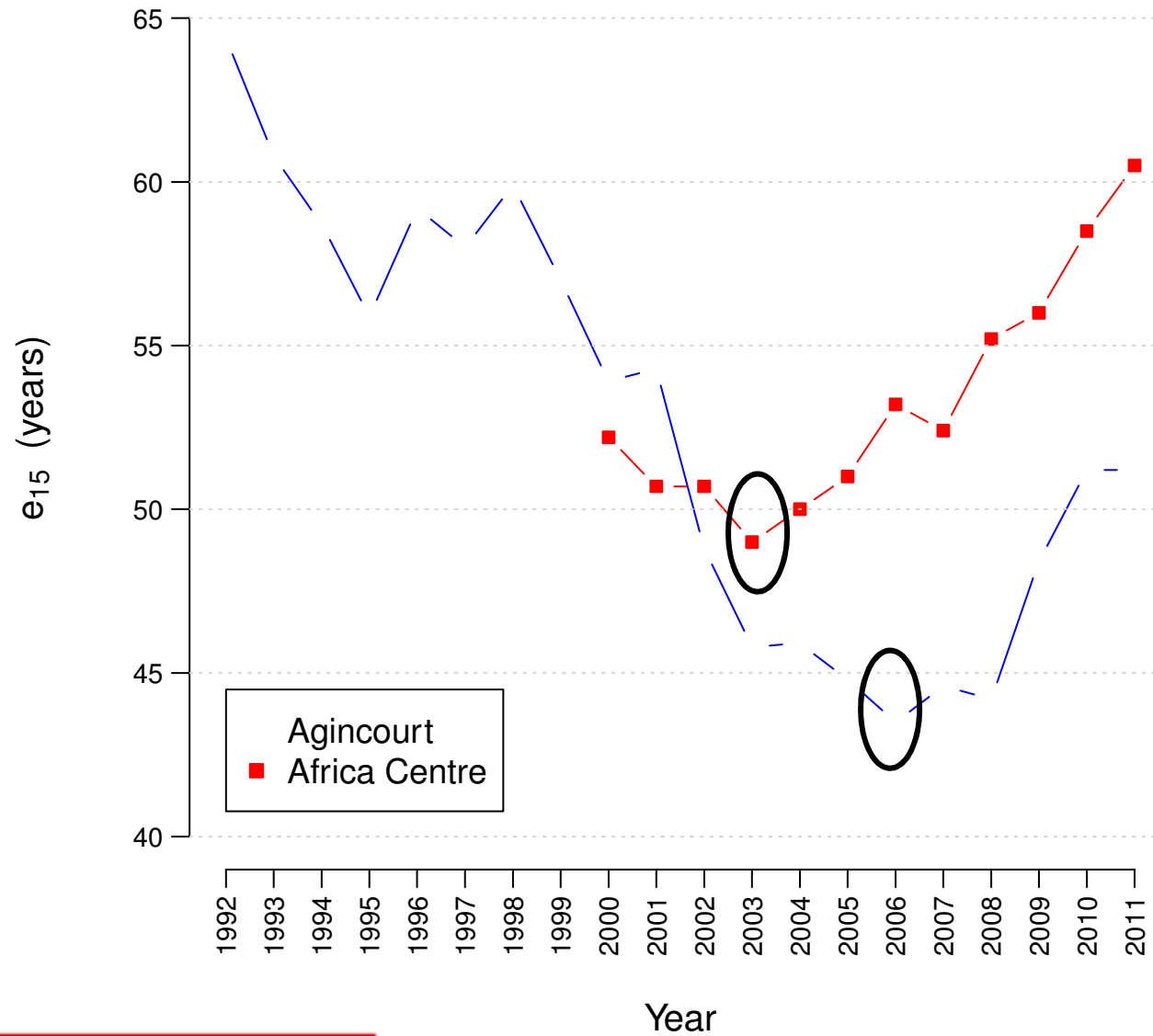
Expectation of Life at Age 15



INDEPTH Network

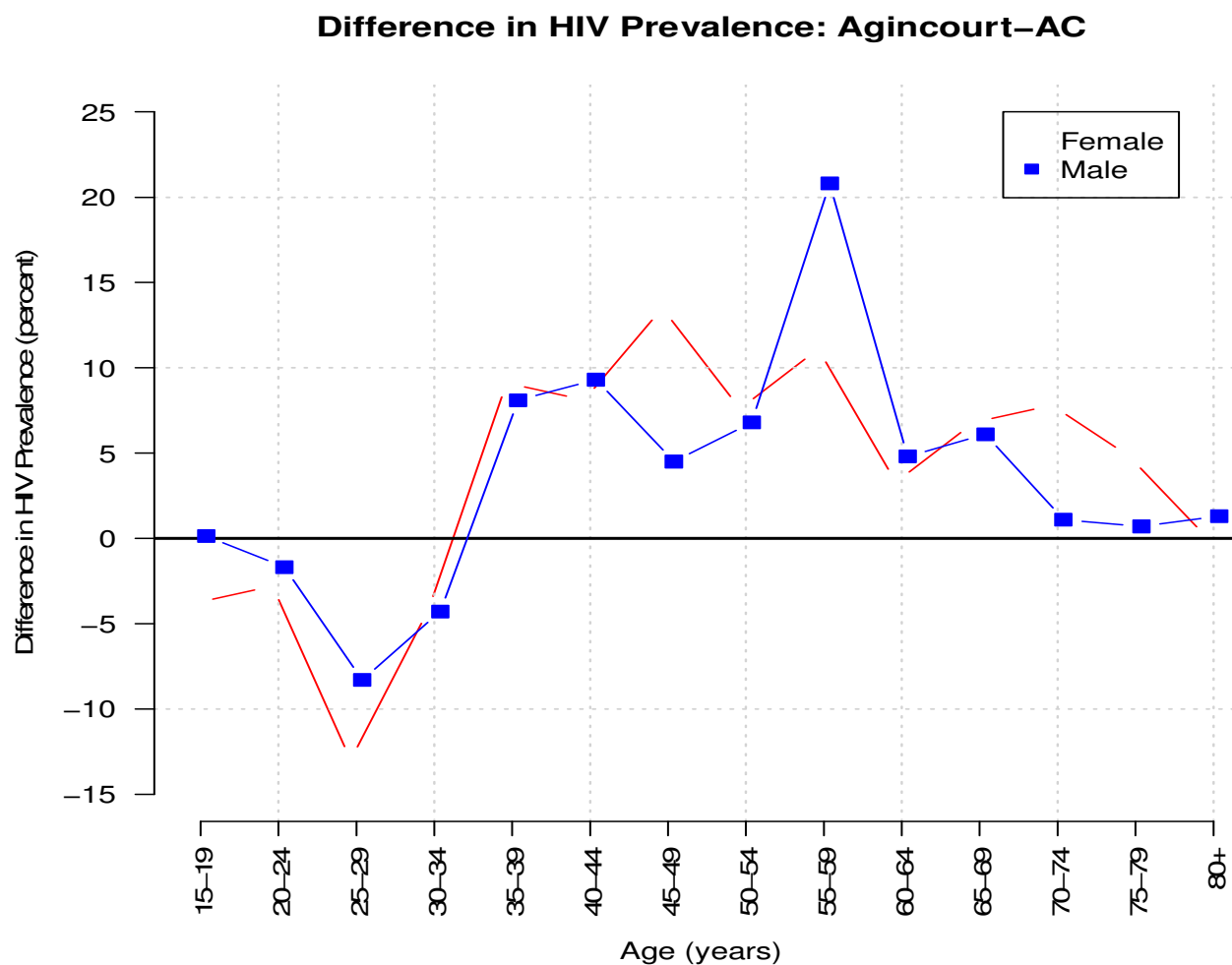
Bor J et al. Science 2012

Expectation of Life at Age 15



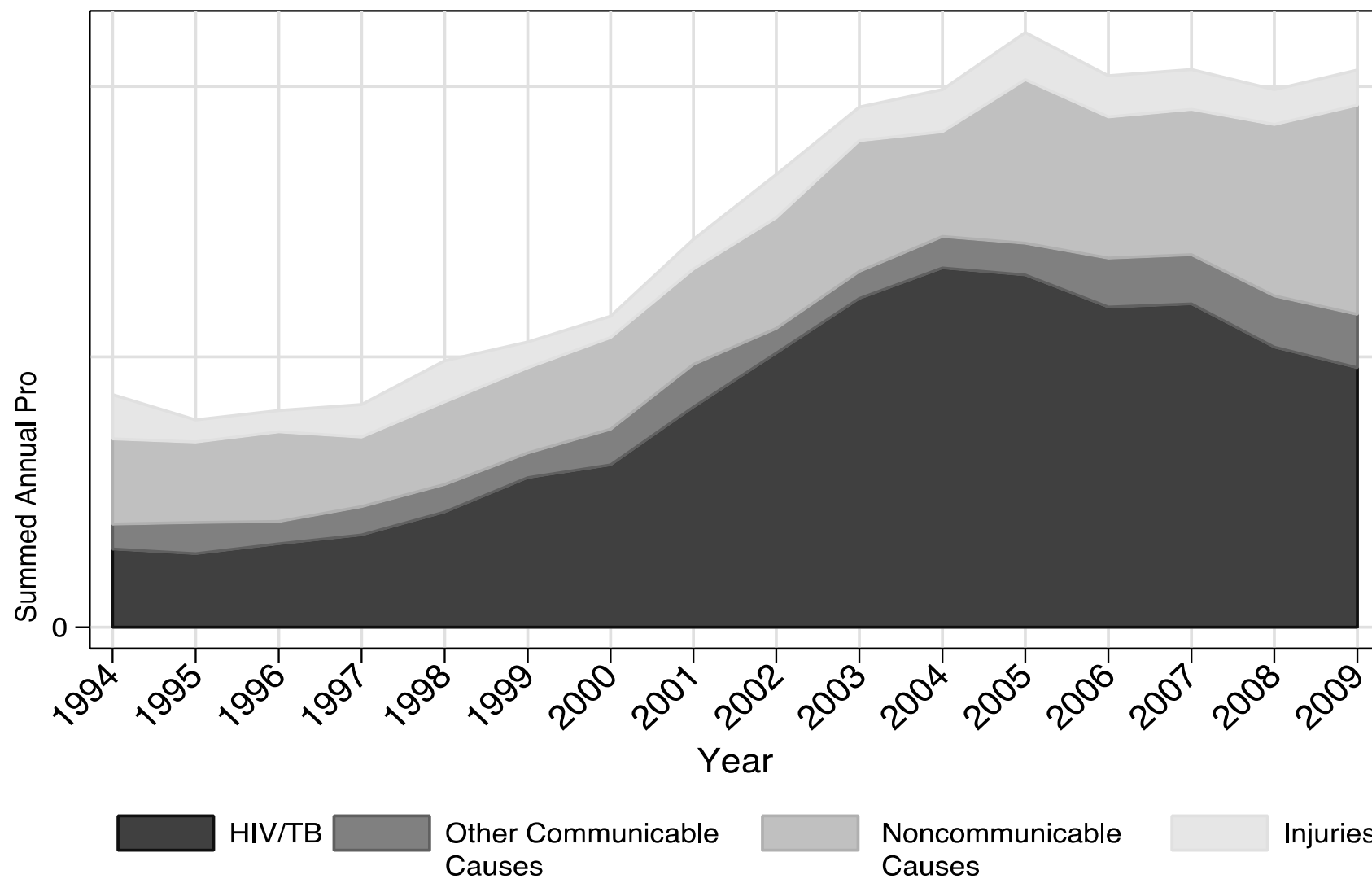
INDEPTH Network

Difference in HIV prevalence between Agincourt and Africa Centre



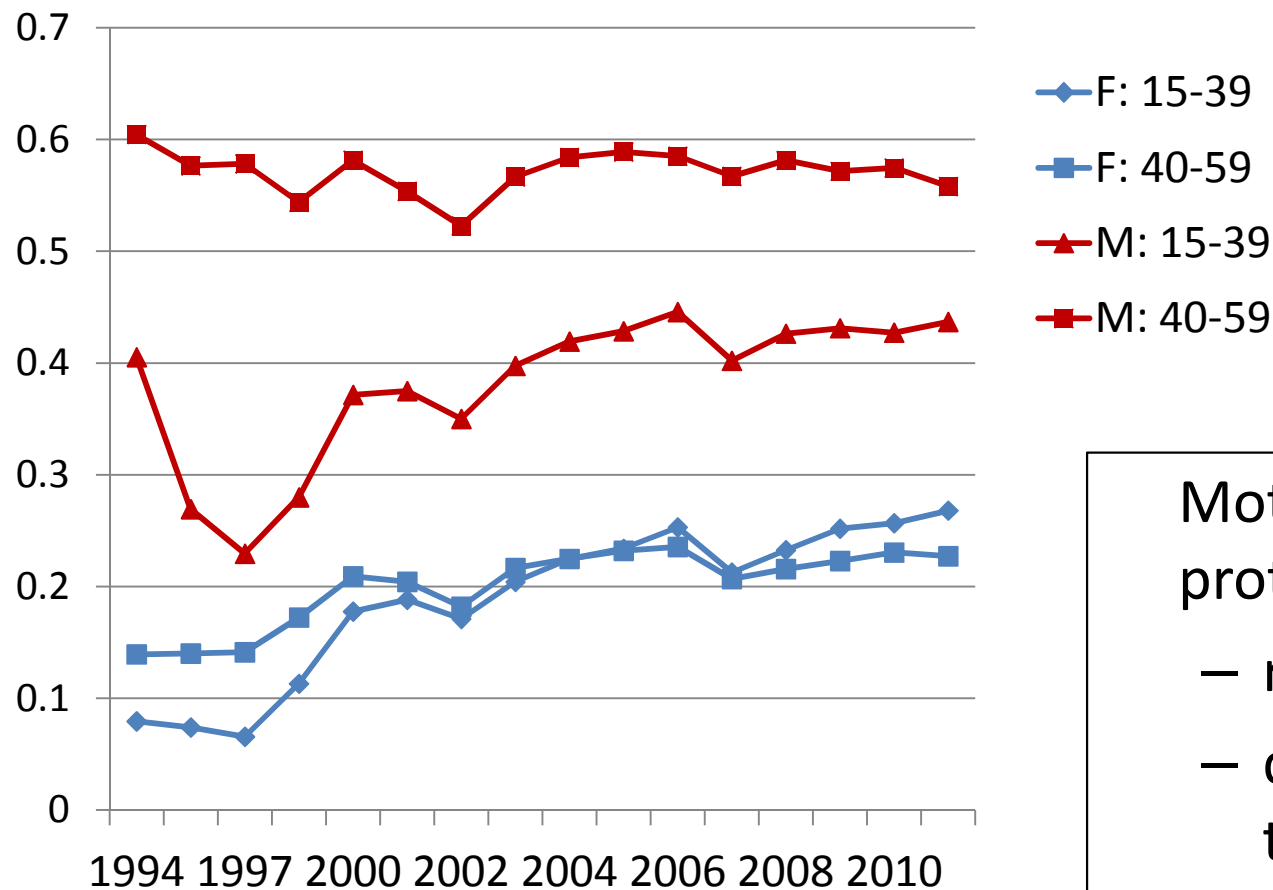
INDEPTH Network

Mortality transition over 15 years, rural SA 1994 - 2009



Tollman et al, Lancet 2008; Mayosi et al, Lancet 2009

Temporary (labour) migration: 1994 – 2011



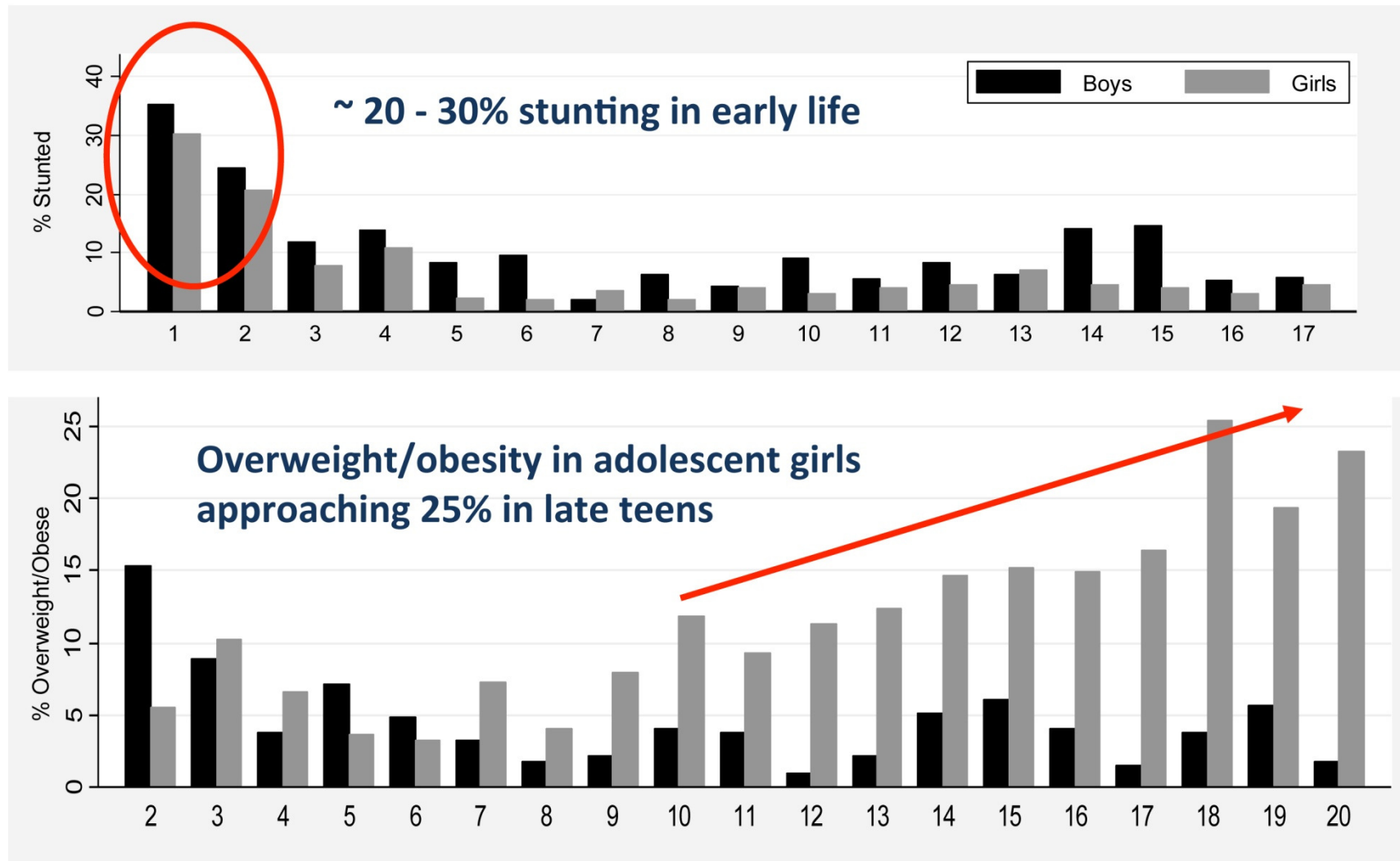
Mother's migration
protective

- remittance benefit
- differential access
to HIV/AIDS
treatment

Local fast foods



Time bomb ticking: Precursors of adult disease



Cardiovascular risk: rural adults 50+

	2003 N=402		2007 N=425		2010/11 N=1475	
	Male	Female	Male	Female	Male	Female
Abdominal obesity (%)	26	67	28	74	34	84
Hypertension (%)	50	56	57	57	64	69



INDEPTH Network

Social roles older women

	All Households	Households with NO woman 60+	Households with woman 60+
Households with at least one child under 15	77.7%	77.8%	76.2%
Household with at least one fostered child	15.4%	12.1%	26.5%*
Household with at least one maternal orphan	5.5%	4.7%	15.9%*
Total N	11,665	8,994	2,671

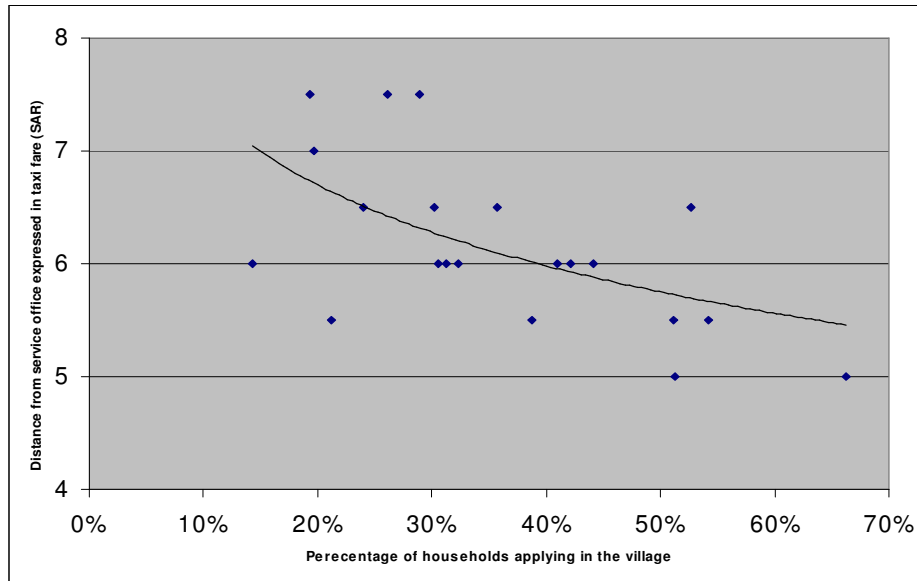
Policy response

- District/Provincial
- National
- Global



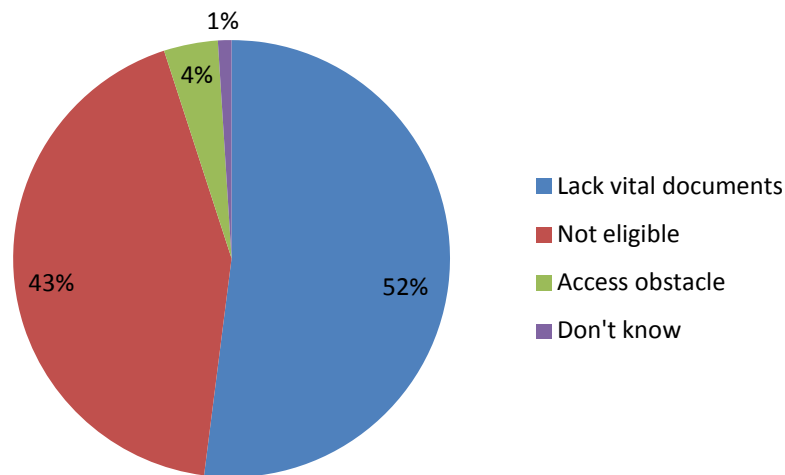
INDEPTH Network

Access and coverage: Child care grants



Poorer households less access

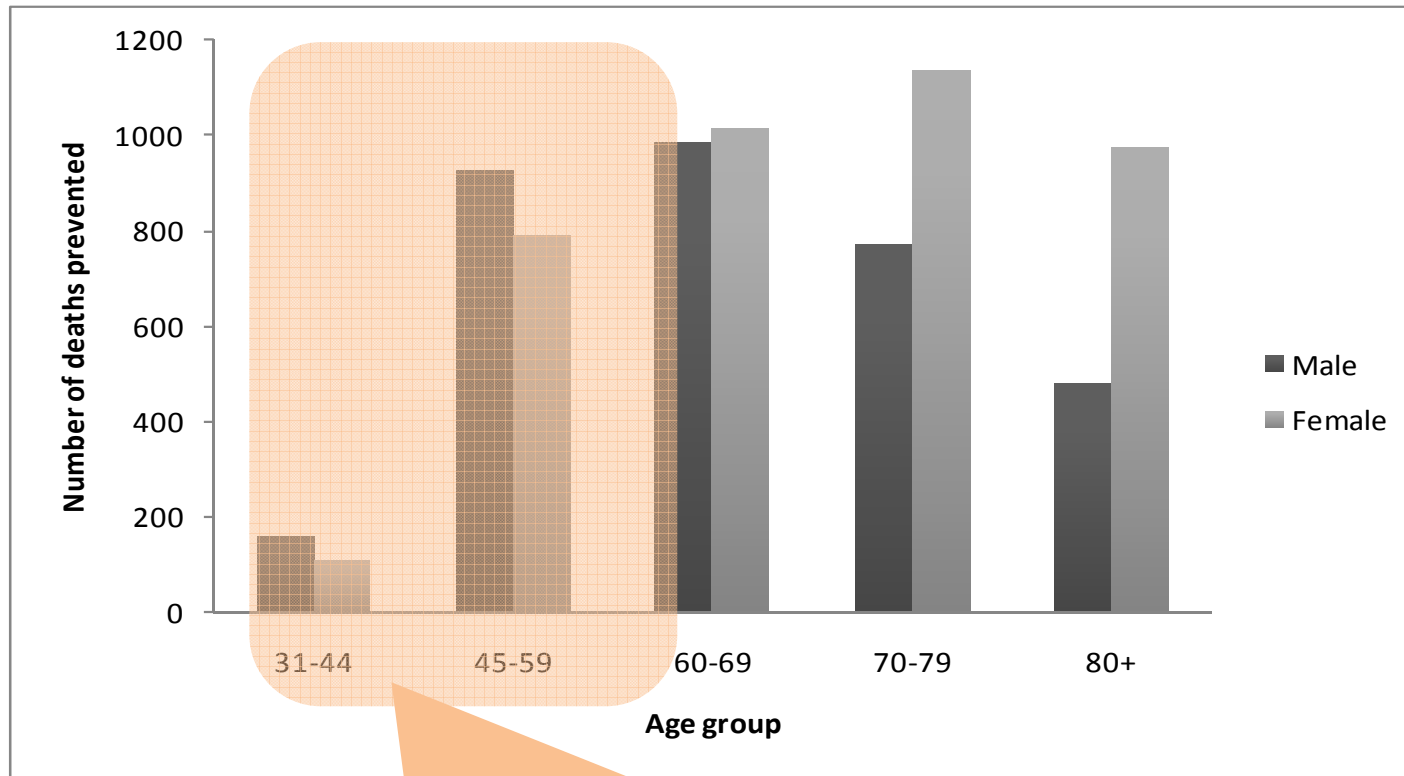
- application barriers (lack vital documents)



Evidence led to Home Affairs intervention with major increase in coverage

Twine et al. Scand J Public Health 2007

Lives saved from stroke = 6400
Saves \$300,000 annually



**Preventing deaths among people under 60
provides large economic savings for the nation**

PRICELESS: Bertram et al, SAMJ 2012; Hofman & Tollman, Lancet Global Health 2013

Global policy impact

- WHO infant feeding guidelines
 - mother-to-child transmission of HIV during exclusive breastfeeding
 - *Coovadia et al. Lancet 2007*
- WHO policy on early initiation of ART
 - high coverage of ART associated with decline in risk of acquiring HIV infection
 - *Tanser et al. Science 2013*



Building researchers and research leadership

	Graduates	Current
PhD	30	43
Masters	54	8



INDEPTH Network

Funding partners - HDSS

South Africa

- Universities: Witwatersrand, KwaZulu-Natal, Limpopo
- Medical Research Council
- Anglo American Chairman's Fund

International

- Wellcome Trust, UK
- National Institutes of Health (NIH), US
- William and Flora Hewlett Foundation, US
- VLIR-UOS (Vlaamse Interuniversitaire Raad-Univ Devt Cooperation), (Belgium)



INDEPTH Network