



Our Vision Statement

Osman Sankoh
Executive Director

ISC 2013
Johannesburg, South Africa



International
Network for the
Demographic
Evaluation of
Populations and
Their
Health
in low- and middle-income countries

Established in 1998

Strategic Plan 2013-2016

Our Vision is...

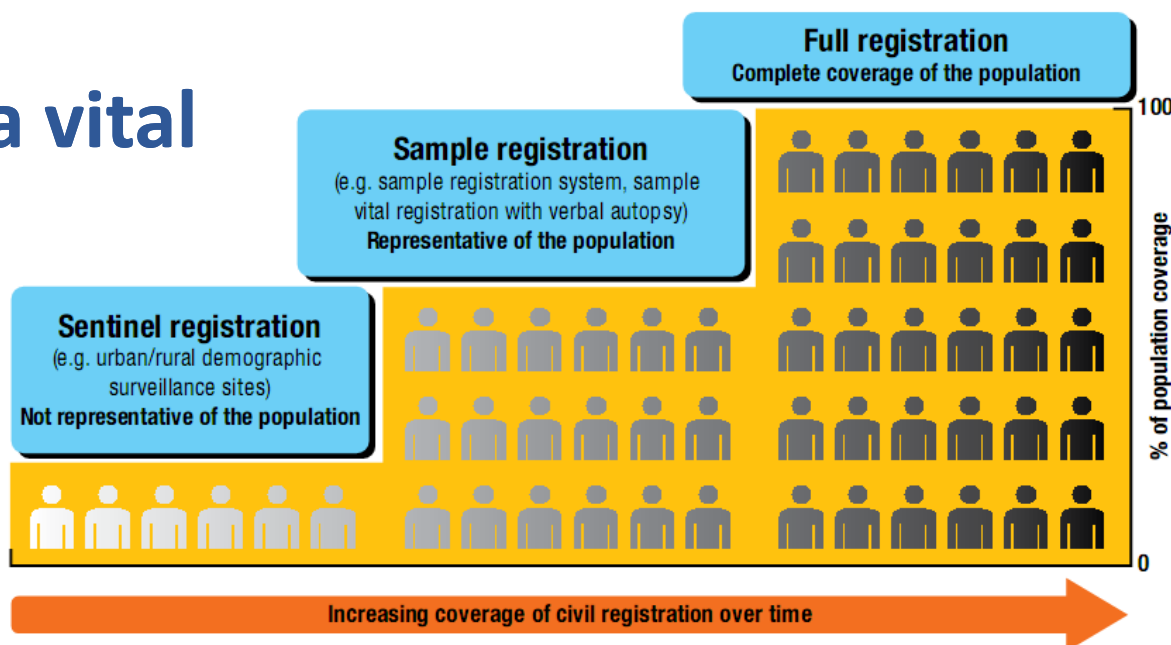
INDEPTH will be an (1) international network of demographic research institutions that (2) provides health and demographic data to enable (3) developing countries set health priorities and policies based on the (4) best available evidence and to (5) guide the cost-effective use of tools, interventions and systems to (6) ensure and monitor progress towards national goals.

Why we are here this week:



The contribution of INDEPTH's HDSS sites to strengthening national health and information systems

Stepping stones to a vital statistics system

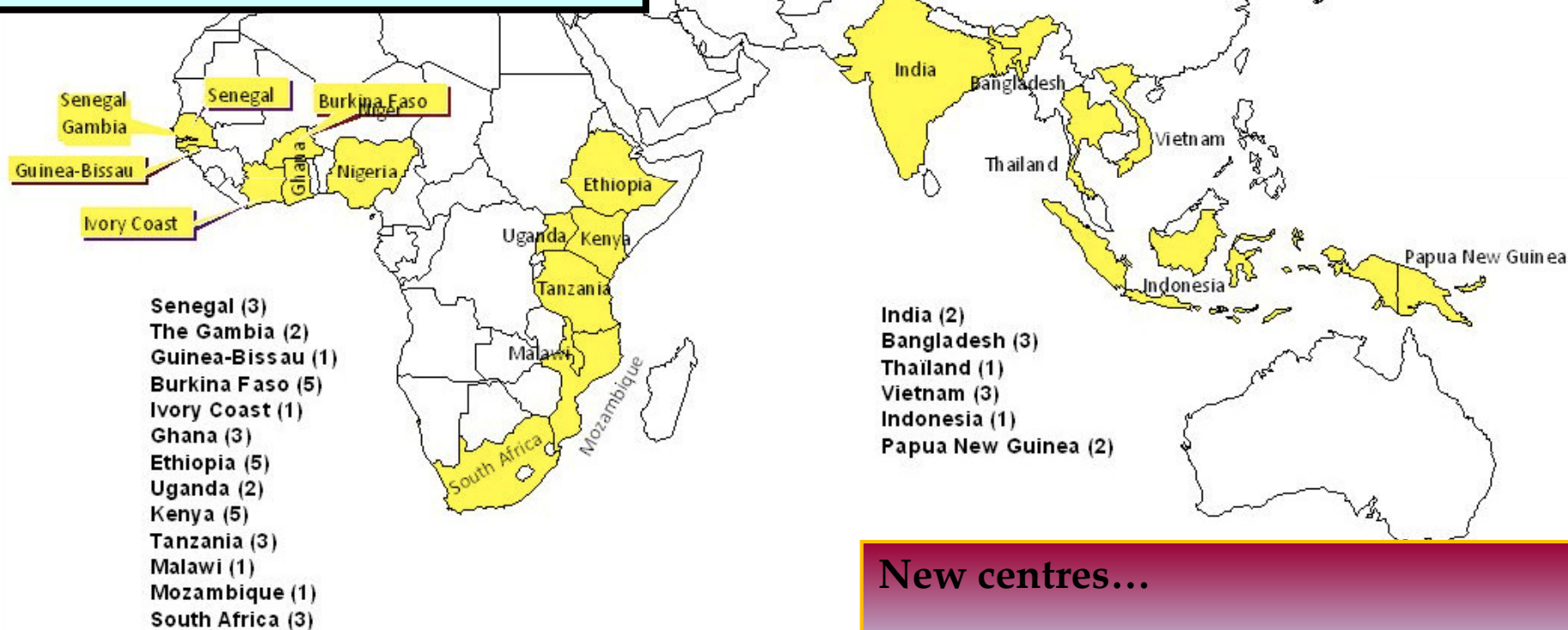


Prior to INDEPTH

- HDSS centres operated as disparate research entities in small localities within countries.
- Many of their findings remained unknown in the international health arena.
- INDEPTH Network constituted in 1998
 - a critical mass of HDSS centres is necessary
 - with the ability to conduct research of international importance using comparative and standardised tools.

With INDEPTH today

Currently 48 HDSSs in 20 countries
36 HDSSs in Africa
10 HDSSs in Asia
2 HDSS in Oceania



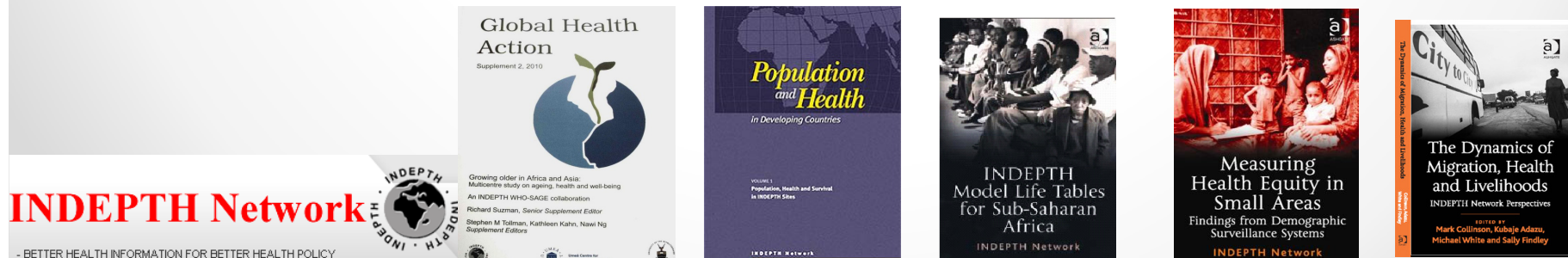
Over 3,300,000 people under surveillance

New centres...

China, Malaysia, DRC, Zambia, Angola, Madagascar, Gabon, Mali, Sierra Leone, Rwanda.

A Decade of INDEPTH development

- Numerous gaps addressed by INDEPTH research:
 - from unrecorded trends in mortality and cause of death to life-course research
- Standardised survey instruments developed
- Multi-site analyses increasingly use harmonised variables and integrated datasets.



Some Landmark Studies 1/3

- The INDEPTH Effectiveness and Safety Studies of Antimalarials in Africa (INESS) - 7 HDSS centres
 - The first time that this kind of Phase IV study for anti-malarials is taking place in Africa under the direction of African researchers.
- Optimising the impact and cost-effectiveness of child health intervention programmes of vaccines and micronutrients in low-income countries (OPTIMUNISE)
 - HDSSs in Asia and Africa

Some Landmark Studies 2/3

- Epilepsy study, 5 countries

Parasites and poor antenatal care are the main causes of epilepsy in sub-Saharan Africa, study reveals

31 January 2013



The largest study of epilepsy in Africa to date reveals that programmes to control parasitic diseases and access to better antenatal care could substantially reduce the prevalence of the disease in this region.

- The INDEPTH **Malaria Clinical Trials Alliance (MCTA)** trained personnel and improved facilities and infrastructure for clinical malaria vaccine and therapeutic trials in 10 countries across Africa.

Some Landmark Studies 3/3

- Work on Adult Health and Aging at 8 INDEPTH centres in Asia and Africa led by **Agincourt HDSS** in South Africa.
 - Field-tested the WHO Global Survey on Adult Health and Global Aging (SAGE).
 - Strengthen empirical understanding of aging and older persons to assess follow-up strategies or test new survey methods.

Centre-specific studies

- Diverse and exciting research portfolios by the individual member centres
- The multi-centre INDEPTH studies succeed only due to strong commitment and increased quality of the member centres
- INDEPTH website provides profiles of these centres (www.indepth-network.org)

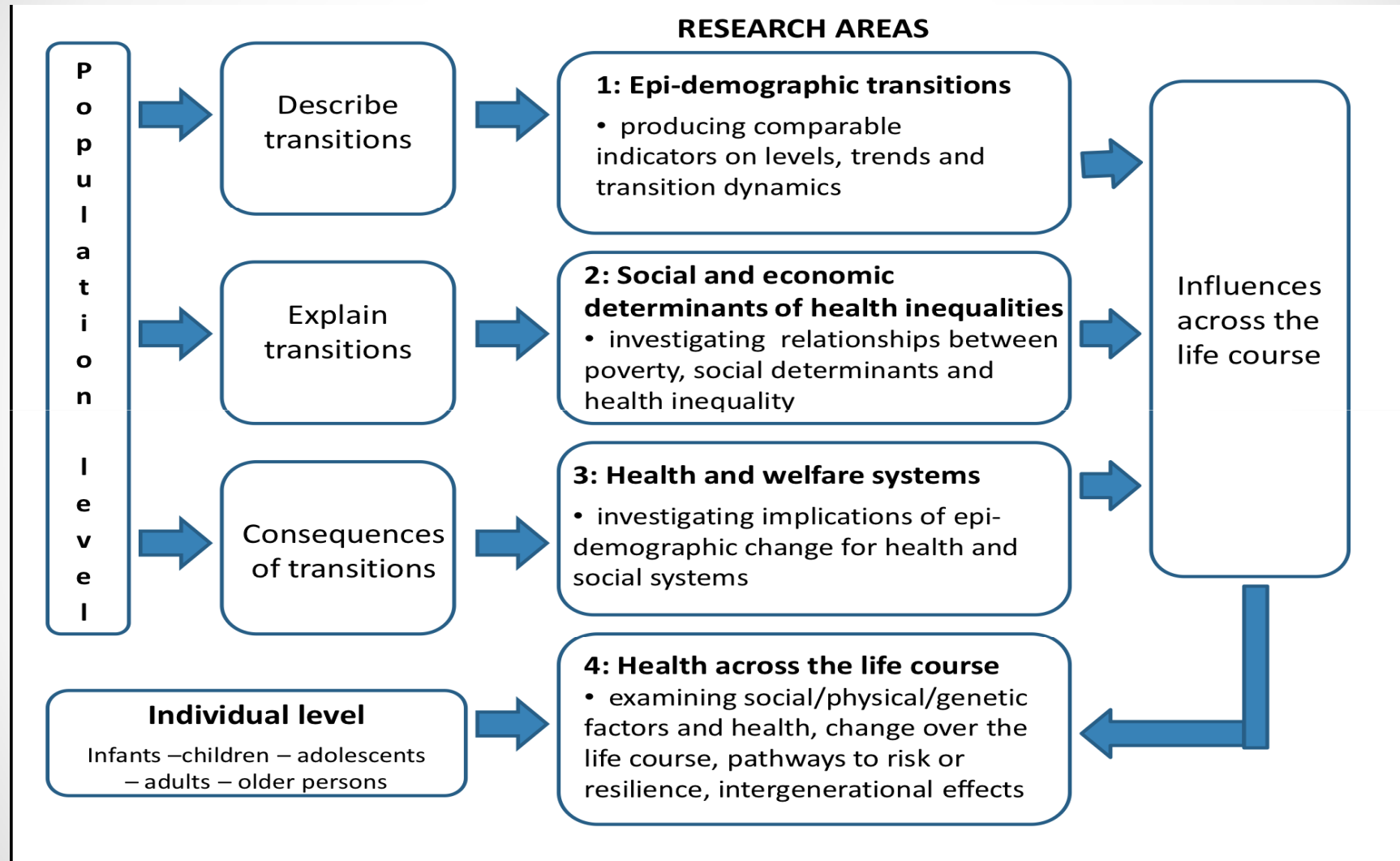
INDEPTH's Scientific Vision

- **Our vision** is to harness the world's HDSSs and bring empirical understanding to bear on critical persisting and emerging health problems.
- The overall aim of INDEPTH's research is to generate **robust scientific knowledge** that can guide evidence-based health and social policy interventions at local, national and international levels.

Our Research Strategy

- INDEPTH conducts research studies and strengthens global capacity to conduct studies that use the key demographic outcomes measured by HDSS centres:
 - fertility, all-cause and cause-specific mortality, morbidity and mobility.
- **Priority is given to:**
 - Outcomes that are **measured poorly** by other data collection systems
 - Answering questions that require research in more than one HDSS.

Research Framework



Structuring the Science

- Observational work: denominators, vital events and contextual variables inherent in HDSSs
- Development of cohorts (e.g. adult, adolescent or household cohorts)
- Intervention-research: including community based trials, and systems and policy evaluations
- Health and social policy and programmes: Apply findings to health and development with support to scaling-up
- Methodological innovation: verbal autopsy, the linking of population-based and health service data, etc.

Capacity Strengthening and training

- Help **individual centres** to publicise their research and results for greater policy influence.
- At a **multi-centre level**, our workshops train data managers and analysts and help develop the next generation of HDSS professionals.
- And at a **broader network level**, we assist centres in developing regional groups and teams.

Data sharing efforts...

- In July 2013 we launched the **world's first online data repository specialising in longitudinal individual exposure**
- **INDEPTHStats**, a website
 - freely available
 - allows users to explore basic demographic indicators from our member centres



INDEPTH Data Repository

[Home](#)[What is this?](#)[How to use it?](#)[History](#)[Data](#)[Citations](#)[News](#)[INDEPTHStats](#)[Contact Us](#)

Africa Centre HDSS, South Africa

The service facility survey catalog provides access to data along with accompanying survey documents from facility level surveys conducted by the World Bank. Service delivery surveys are tools to measure the effectiveness of basic services such as education, health, and water and sanitation...The Africa Centre Demographic Information System (ACDIS) started data collection in January 2000. [Read More »](#)

As of October 27,
2013 the Library
contains

7 surveys

3,160 citations

539 variables



INDEPTHStats

Displaying longitudinal health and demographic indicators from INDEPTH member centres in Africa, Asia and Oceania

[Home](#)[HDSS Population Data](#)[HDSS Fertility Data](#)[HDSS Migration Data](#)[HDSS Mortality Data](#)[HDSS Cause Of Death Data](#)

2010

2009

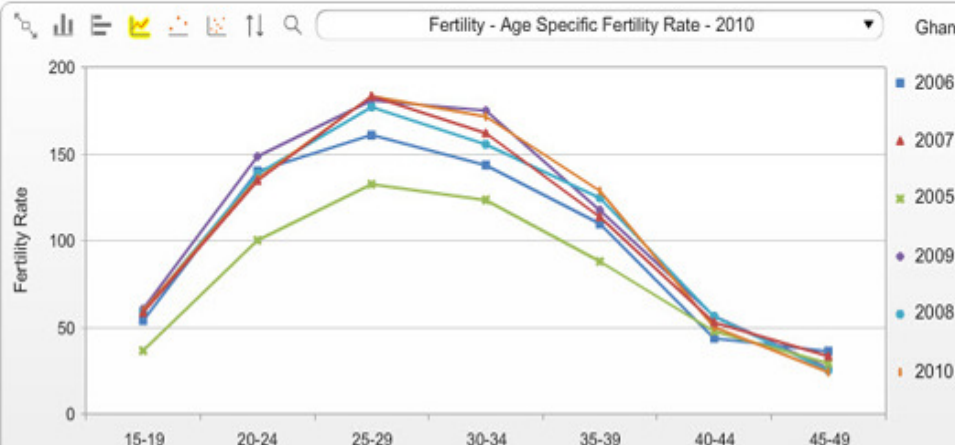
2008

2007

2006

2005

2004



Ghana - Kintampo HDSS

✓ x ✓



All HDSS

- Bangladesh - Chakaria HDSS
- Bangladesh - Matlab HDSS
- Burkina Faso - Ouagadougou H..
- Gambia - Farafenni HDSS
- Ghana - Dodowa HDSS
- Ghana - Kintampo HDSS**
- Ghana - Navrongo HDSS
- India - Vadu HDSS
- Kenya - Kilifi HDSS
- Kenya - Kisumu HDSS
- Kenya - Nairobi HDSS
- Mozambique - Manhica HDSS

INDE

- BETTER HEALTH

THE LANCET Global Health

INDEPTH launches a data repository and INDEPTHStats

THE LANCET Global Health

The good, the bad, and the neglected



Public Health Association of South Africa

Represents the interests and promotes greater equity of the public health in South Africa.

INDEPTH Data Repository & INDEPTHStats



International Union for the Scientific Study of Population

INDEPTH Data Repository

The International Network for the Demographic Evaluation of Populations and Their Health (INDEPTH)

wellcome trust
International network makes critical health and demographic data available
5 July 2013

THE TIMES OF INDIA

Health data from global field sites online

www.peacefmonline.com

PEACE FM
Online



Ghana News Agency

Speed, Accuracy and Objectivity

Like 6.4k

INDEPTH Network launches INDEPTH Stats

Thursday 4th July, 2013



Jul 02, 2013 at 7:32pm

INDEPTH Network makes critical health and demographic data available



INDEPTH Network Makes Critical Health And Demographic Data Available

- BET

In Conclusion....

Through our global network, **INDEPTH** is developing the **requisite information base**,

providing **high quality longitudinal data** about

the lives of people AND how development policies and programmes impact on those lives

