

Multi-centre Analysis of the Dynamics In Migration and Health -MADIMAH Project-

Mark Collinson (convener)

Migration, Urbanisation and Health Working Group

Donatien Beguy, Philippe Bocquier, Carren Ginsburg

Researchers in 11+ HDSS centres



Background

- Population transitions rapid and unpredictable
- Migration and urbanisation increasingly recognised
- Changing exposures -> changing health outcomes.
- Migration process is complex
- Conventional understanding of rural-to-urban migration frequently blunt
- Comprehensive, valid data about flows are scarce
- Two way flows; circulation; impermanent forms of migration occur

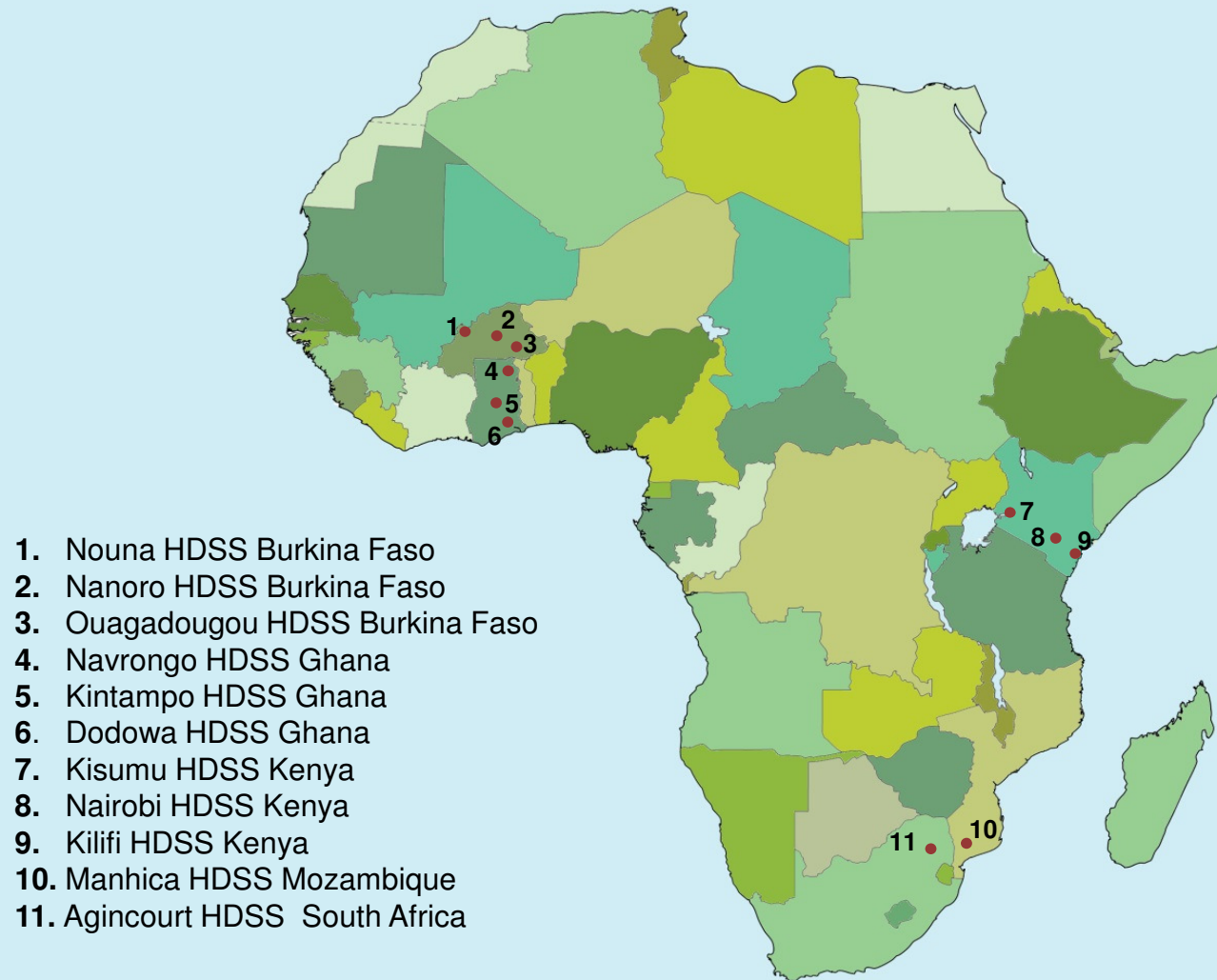
MADIMAH Project Aims

- Understand migration patterns in INDEPTH HDSS populations
- Understand what drives migration
- Understand how migration relates to mortality.
- Produce databases for longitudinal analysis
- Provide training in longitudinal analysis

MADIMAH method

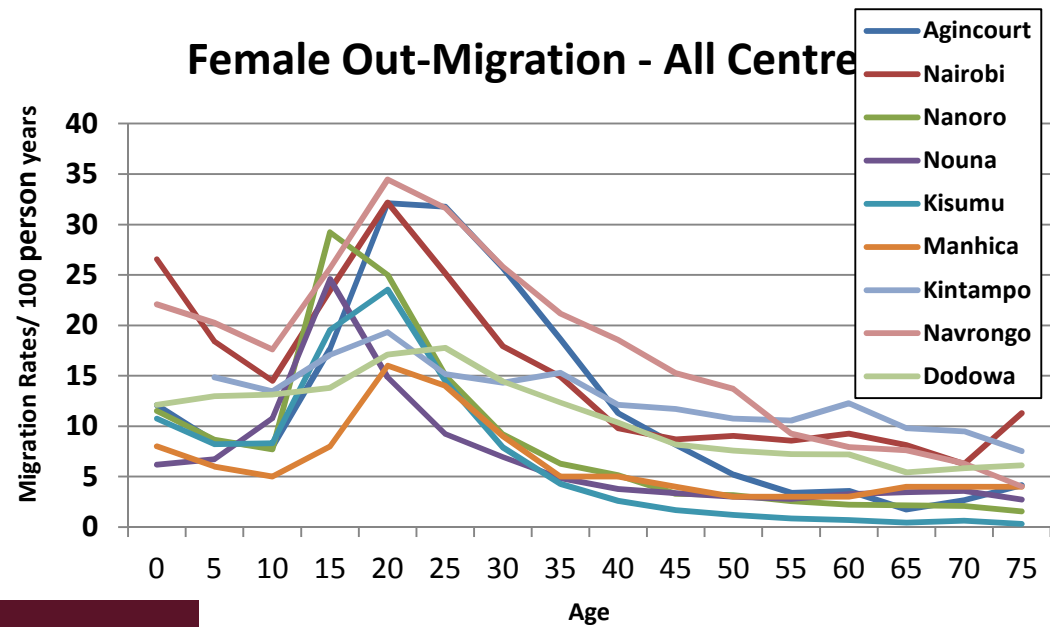
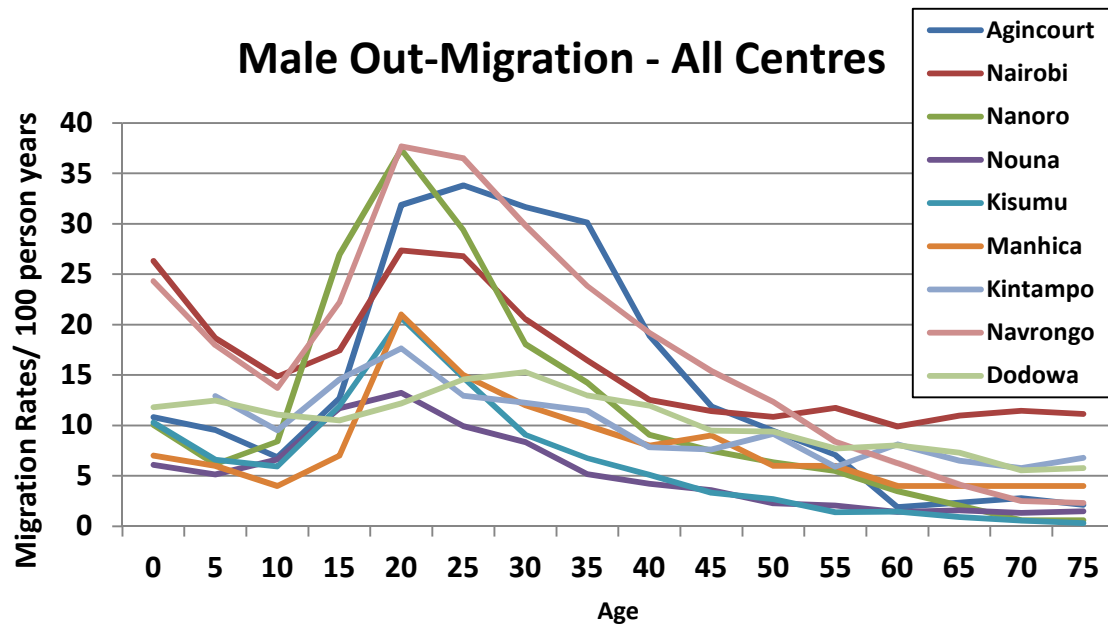
- Standardised data preparation for event history analysis in Stata
- HDSS -> Biographical file of individual events in time
- Data quality – event/following-event matrix
- Time-varying covariates from HDSS
- Standardised analysis of
 - the determinants of migration
 - migration as a factor influencing mortality

Map of Centre Locations



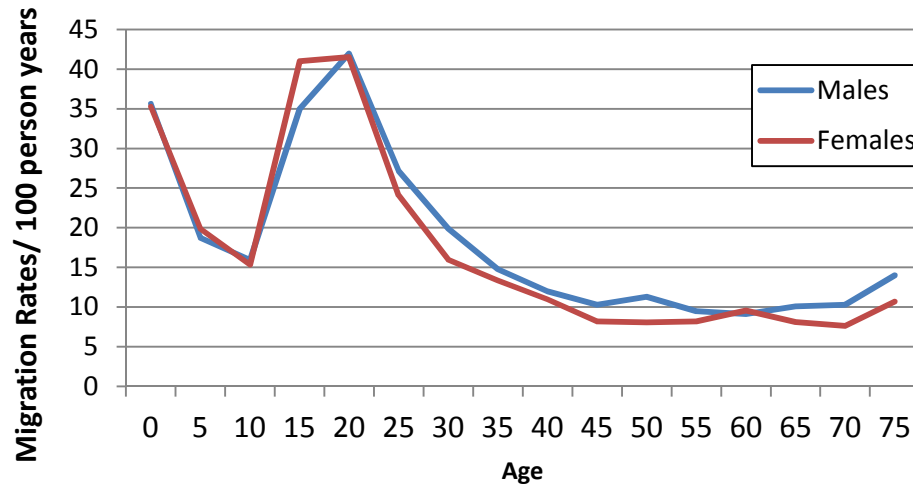
INDEPTH
SCIENTIFIC CONFERENCE 2013



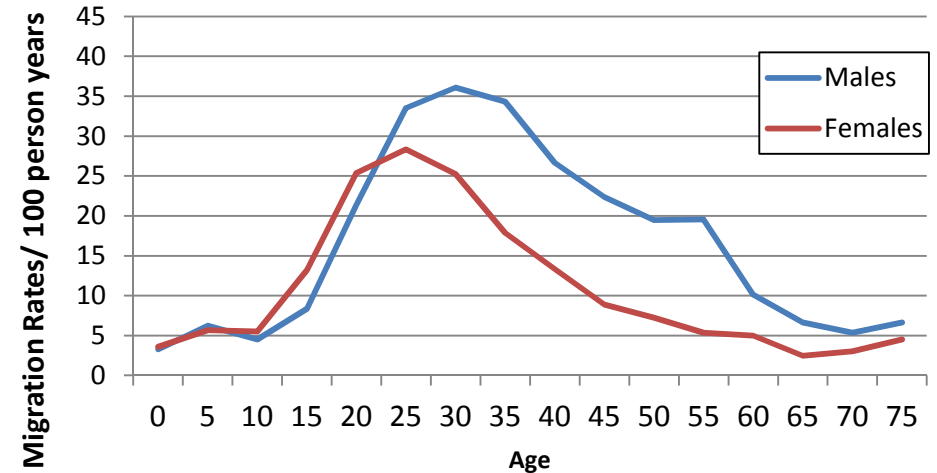


Age Sex Migration rates for Agincourt and Nairobi in 2010/2011

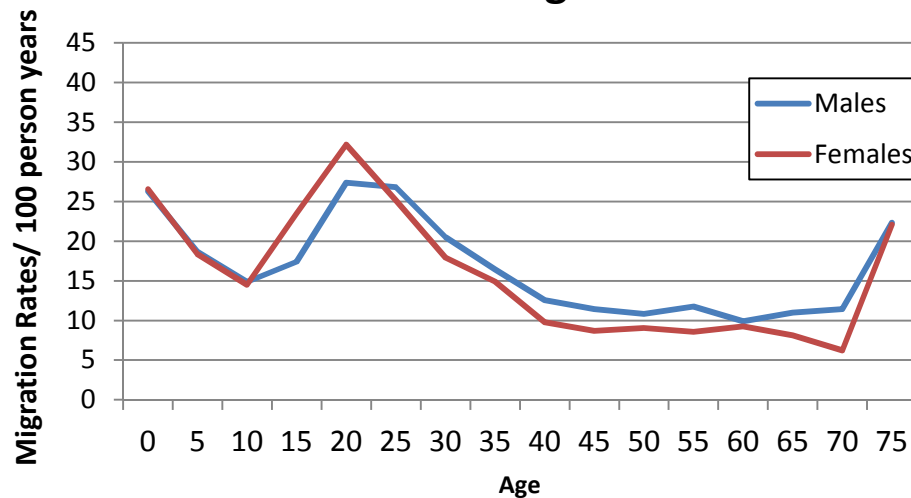
Nairobi In-Migration



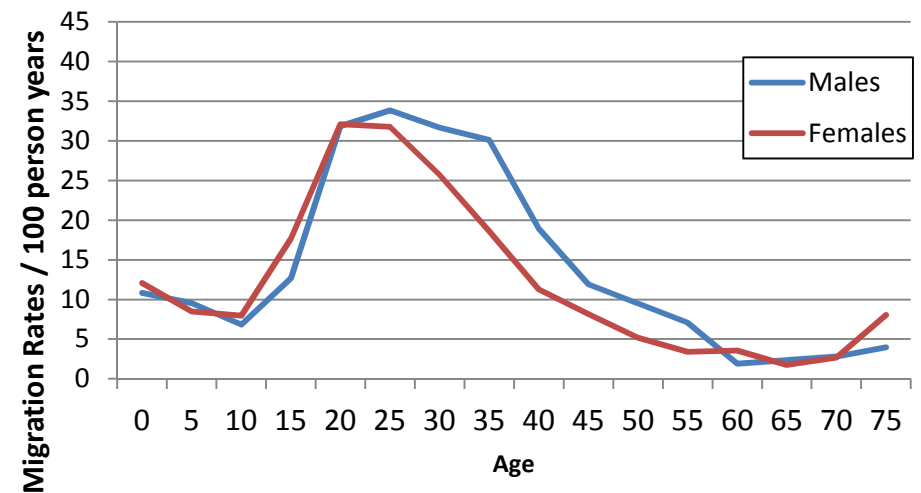
Agincourt In-Migration



Nairobi Out-Migration

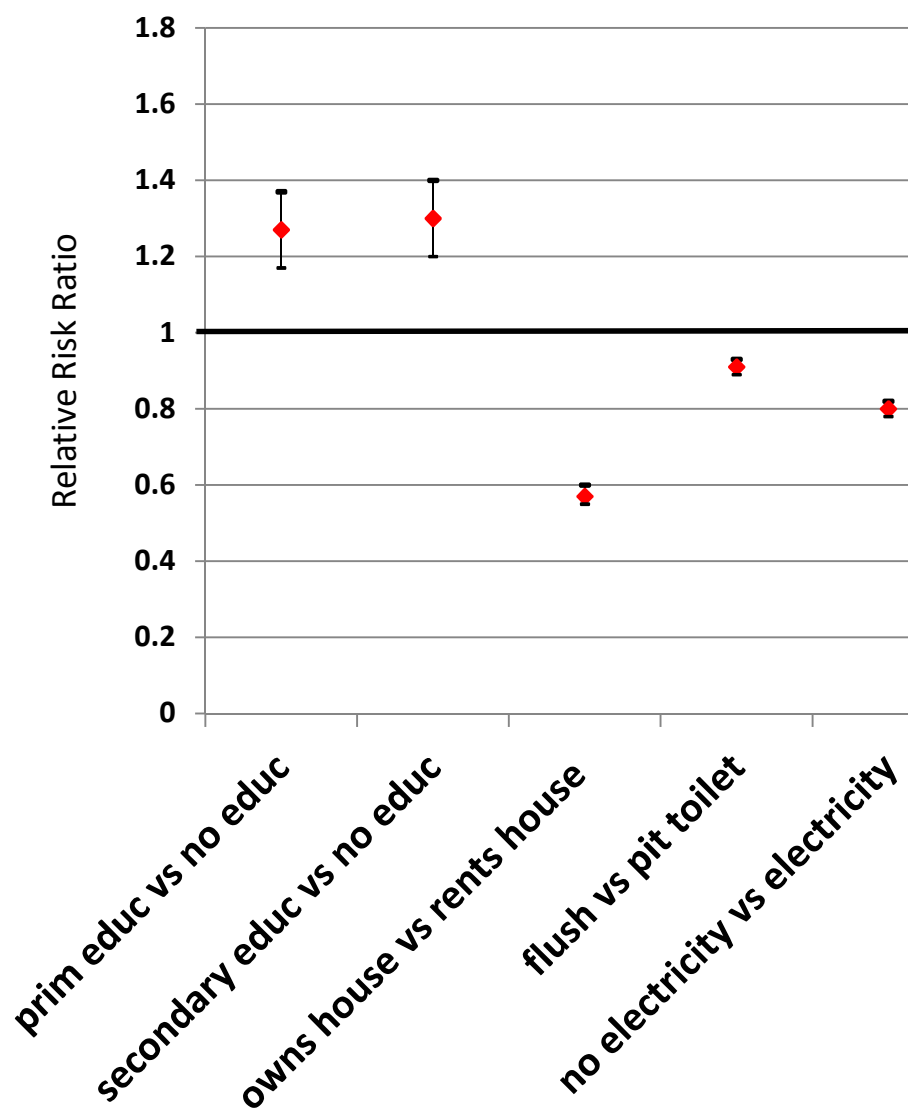


Agincourt Out-Migration

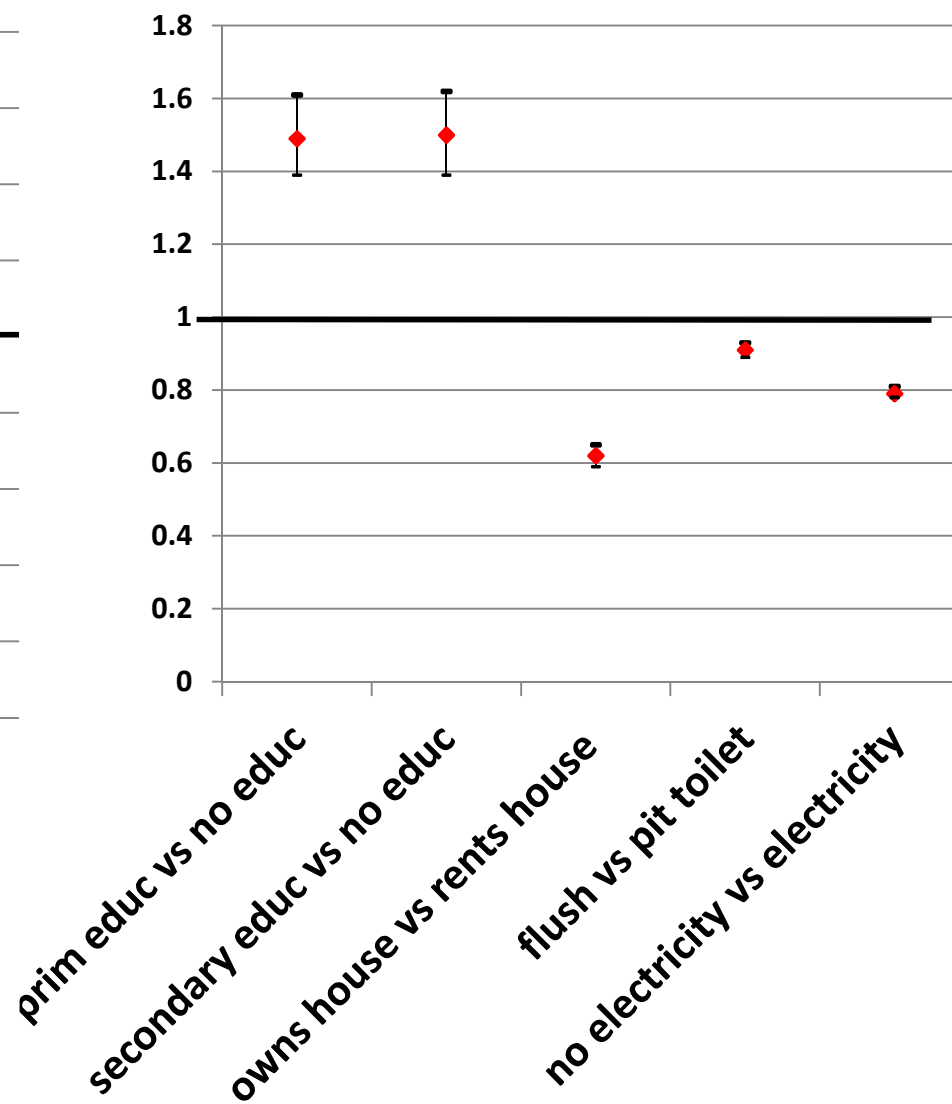


Factors associated with out-migration from Nairobi HDSS

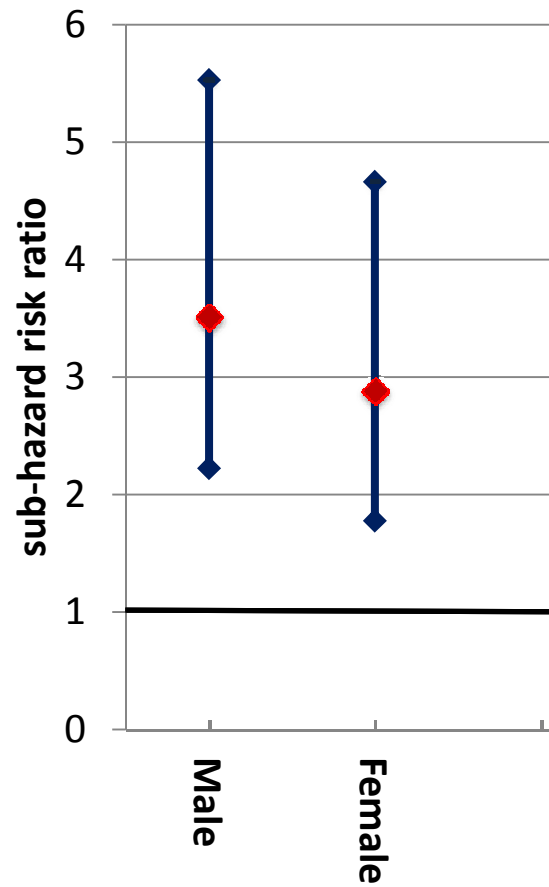
Males



Females

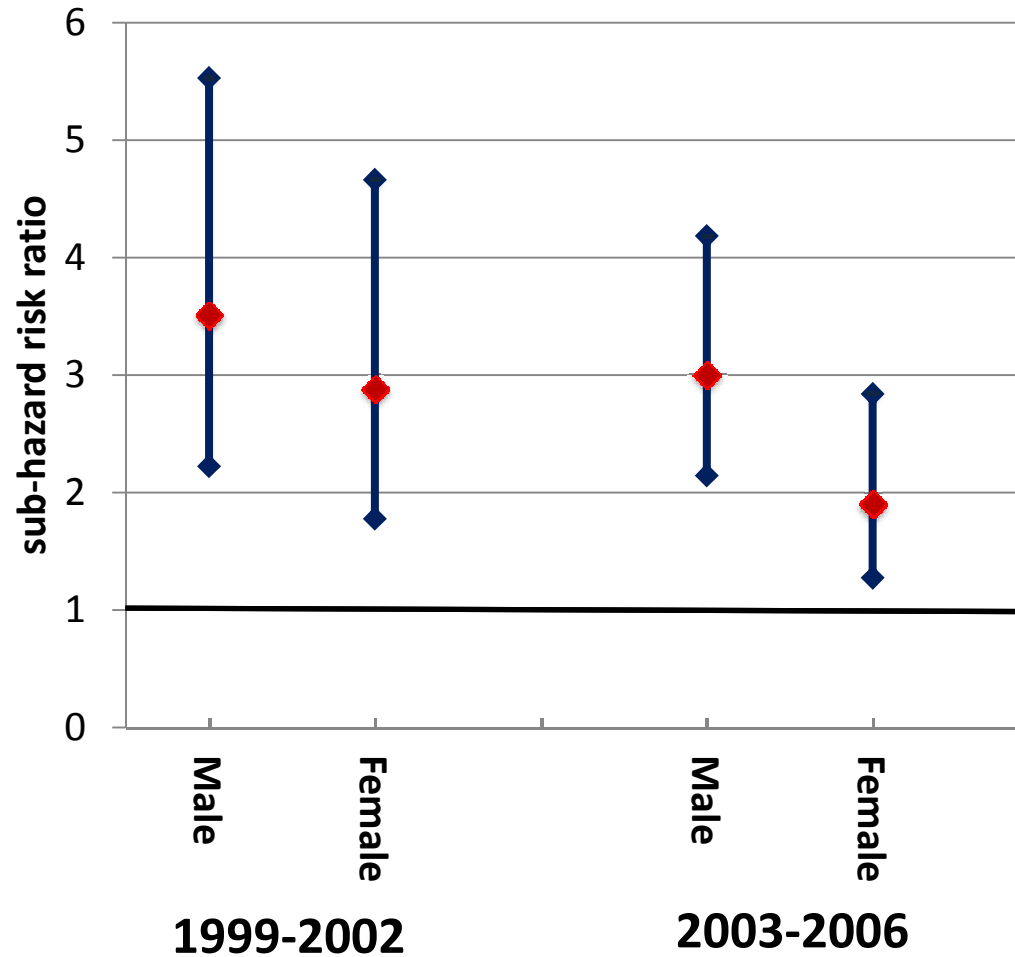


**Risk ratios for mortality from non-communicable disease
for migrants vs. non-migrants, Agincourt**

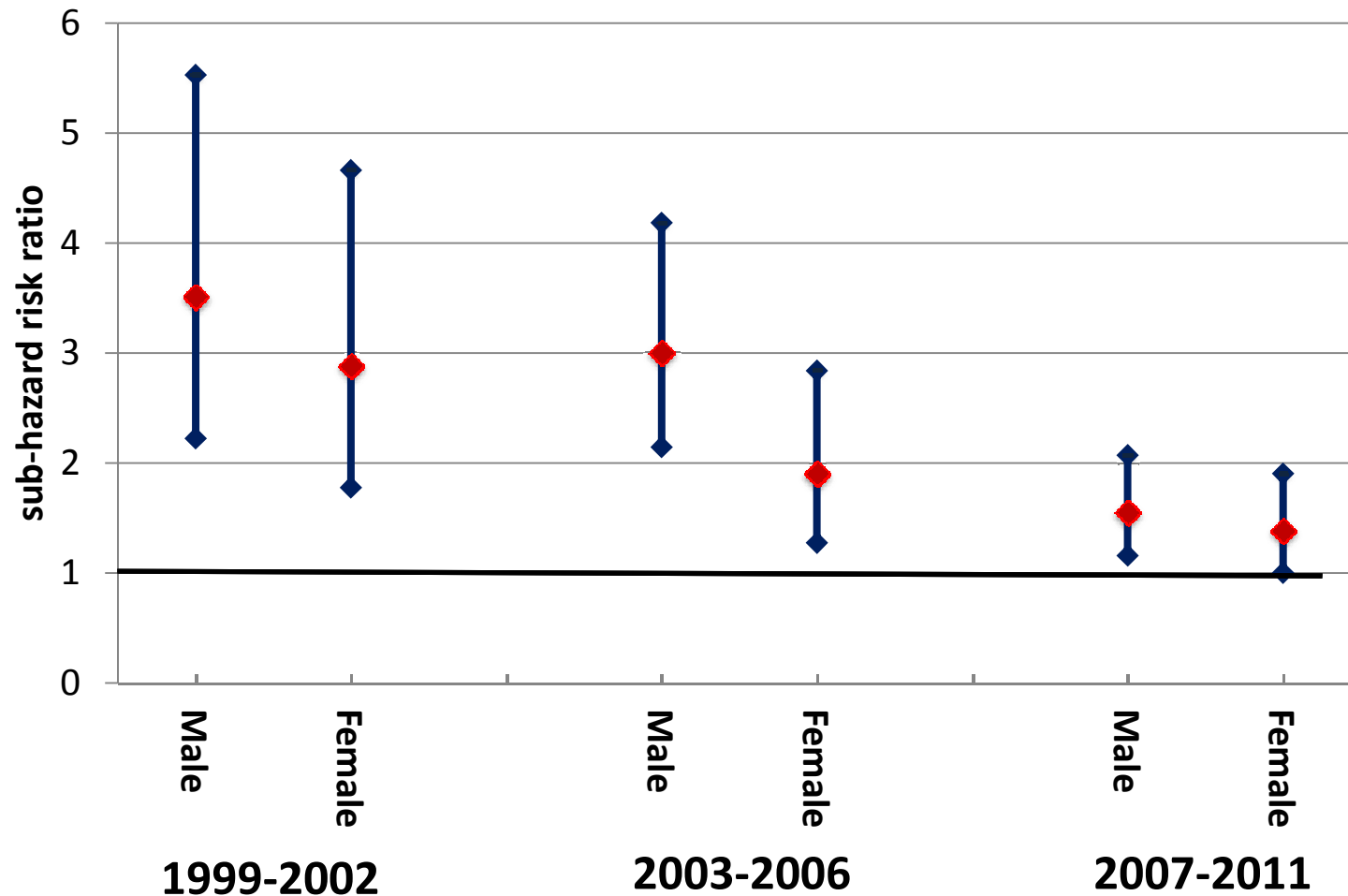


1999-2002

Risk ratios for mortality from non-communicable disease for migrants vs. non-migrants, Agincourt



Risk ratios for mortality from non-communicable disease for migrants vs. non-migrants, Agincourt



Working Group aspirations

- Produce evidence of the causes and consequences of migration, standardised across many settings
- Thereby improving the understanding that is currently shaped by large cross-sectional studies with limited temporal detail (or by theory)
- To influence how policy makers see migration and urbanisation in their countries

Next steps

- Publish single centre and multi-centre studies of the dynamics and determinants of migration
- Launch MADIMAH stage 2 on the relationship between migration and mortality
 - Proposal writing is underway
 - Using the MADIMAH methods
 - All HDSS Centres are welcome
 - NB attend the WG workshop tomorrow at 17h00 room 210